

888 BROADWAY, BROOKLYN, NY 11206

FOR LEASE

1,600 – 5,700 SF VANILLA BOX RETAIL SPACES WITH GLASS FRONTAGE AND 25 FT CEILINGS

Between Stockton Street & Lewis Avenue



SHLOMI BAGDADI
212.433.3355 x101
sb@tristatecr.com

CHARLES ELBAZ
212.433.3355 x1014
charles.e@tristatecr.com

FREDY BAGDADI
212.433.3355 x1003
freddy.b@tristatecr.com

TRI STATE COMMERCIAL®

PROPERTY SUMMARY

LOCATION

Located in the Bedford-Stuyvesant neighborhood of Brooklyn.


HIGHLIGHTS

- Brand New Development
- Loading and Unloading Area in the Rear of Stockton Street

SPACE DETAILS

- Vanilla Box
- 25 FT Ceilings
- 2 Means of Egress
- Roll-In Gate
- Space A: 1,600 SF
- Space B: 2,100 SF
- Space C: 2,000 SF
- Options to Combine Spaces:
 - Space A + B: 3,700 SF
 - Space B + C: 4,100 SF
 - Space A + B + C: 5,700 SF

TRANSPORTATION

 Trains at Flushing Avenue

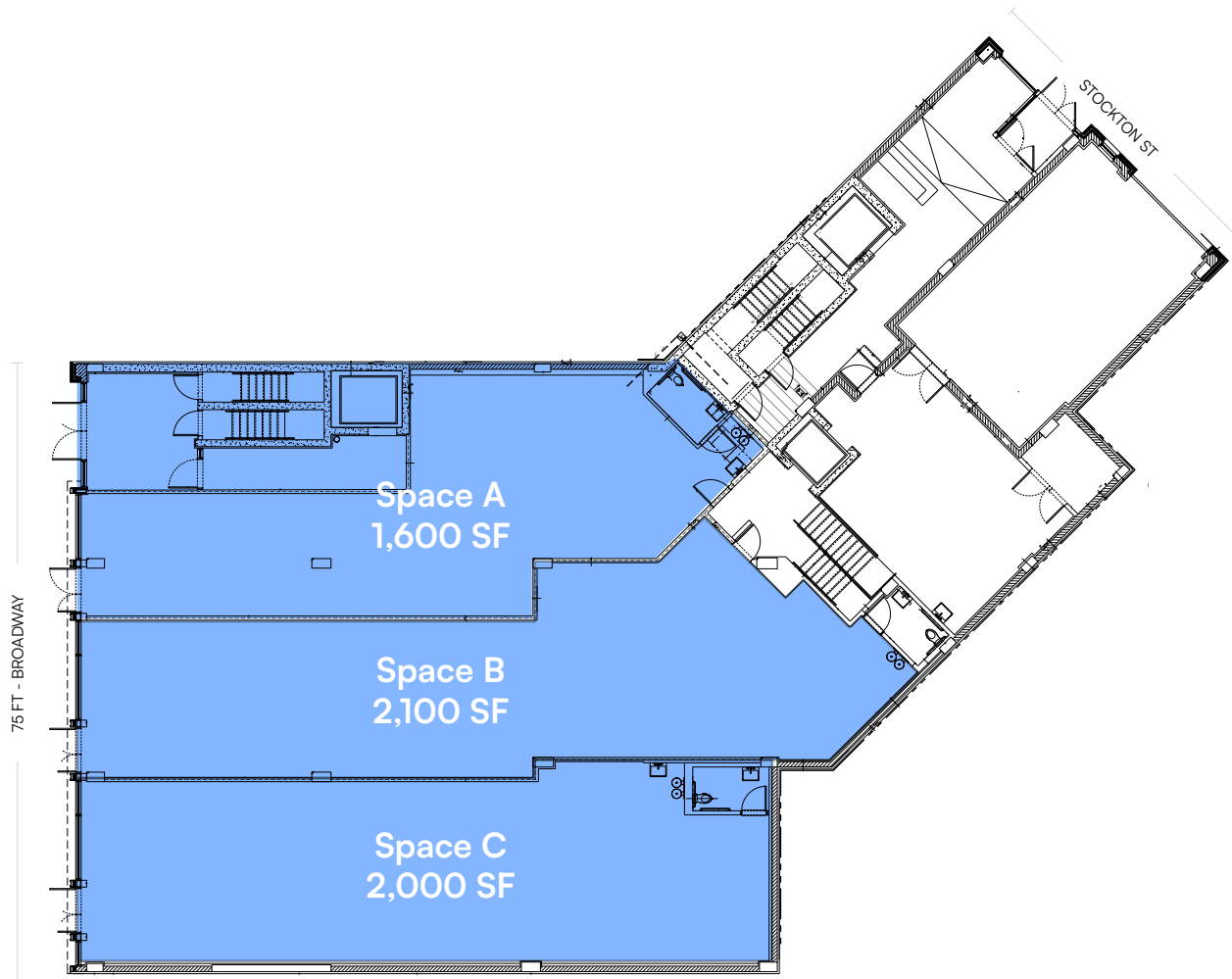
 Bus Lines

NEIGHBORS

Cafe Erzulie, Brooklyn Art Cave, Brooklyn Mayd Powersports, State Farm, Horseradish Market, Daily Dose Pharmacy, Gopuff, Milly's Pizzeria, Broadway Dental Center, Auntie Anne's, Bond Collective, Native Restaurant and Lounge, Dunkin', Little Mo, FOOD BAZAAR, Flying Apple, Mayas Snack Bar, Zuly Beauty Studio, Pizza Hut, Popeyes Louisiana Kitchen, Checkers, Crazy Pizza and Wings, and more!

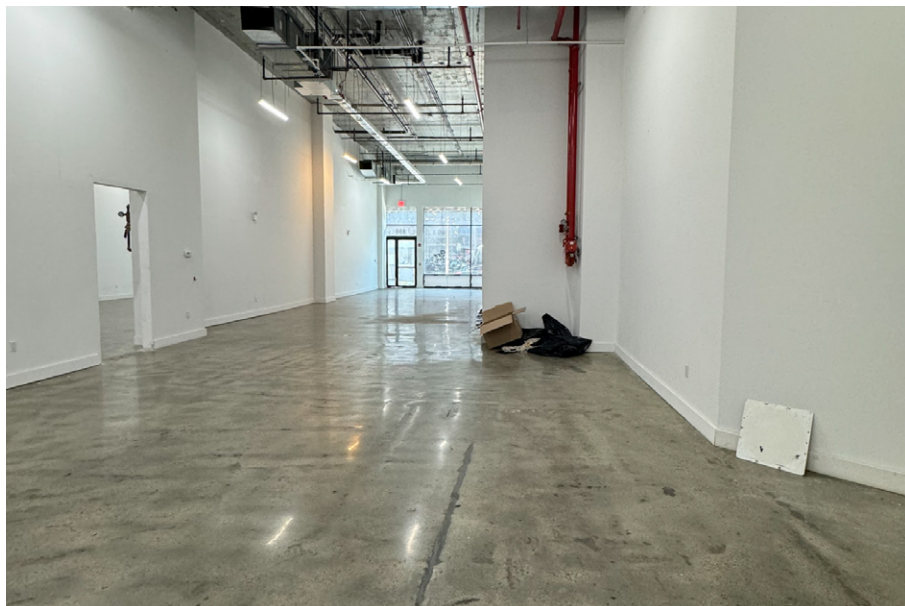


FLOOR PLANS

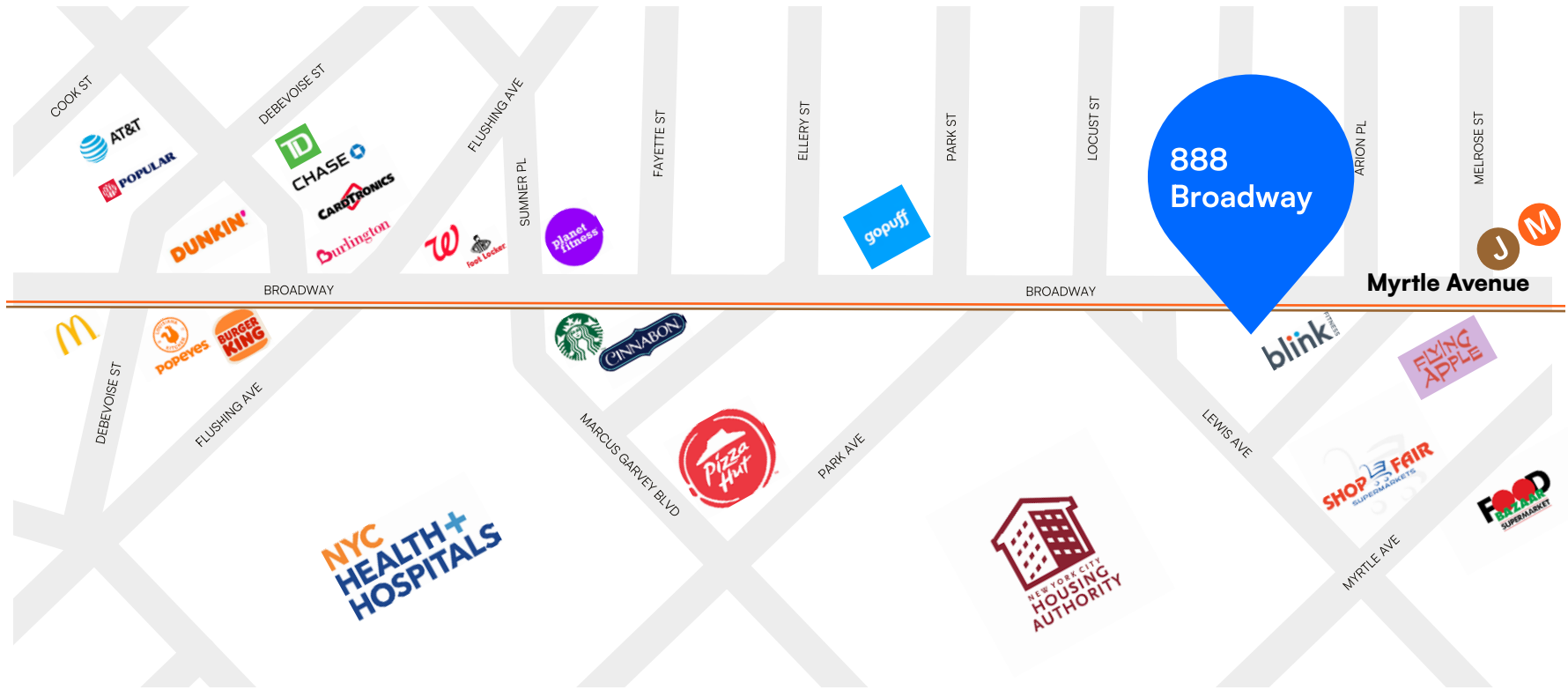


All square footages are approximate

PROPERTY PHOTOS



RETAIL MAP



888 BROADWAY, BROOKLYN, NY 11206

1,600 – 5,700 SF VANILLA BOX RETAIL SPACES WITH GLASS FRONTAGE AND 25 FT CEILINGS

Between Stockton Street & Lewis Avenue

For Pricing Call: **212.433.3355**

SHLOMI BAGDADI
212.433.3355 x101
sb@tristatecr.com

CHARLES ELBAZ
212.433.3355 x1014
charles.e@tristatecr.com

FREDY BAGDADI
212.433.3355 x1003
freddy.b@tristatecr.com

TSC.