

TRI STATE COMMERCIAL®

**FOR SALE**

1,532 SF WASHINGTON HEIGHTS DEVELOPMENT SITE

# 548 West 160th Street

New York, NY 10032

Between Broadway & Amsterdam Avenue

**\$1,099,000**  
OFFERED AT

SHLOMI BAGDADI  
212.433.3355 x101  
sb@tristatecr.com

JACK SARDAR  
212.433.3355 x106  
jack.s@tristatecr.com

CHARLES ELBAZ  
212.433.3355 x1014  
charles.e@tristatecr.com

**TSC.**

# PROPERTY SUMMARY

## EXECUTIVE SUMMARY

548 West 160th Street presents a compelling development opportunity in the vibrant Washington Heights neighborhood of Manhattan. This vacant development site is ready for immediate construction and offers exceptional potential for investors, developers, or owner-users seeking a single-tenant project in a growing urban corridor. Situated on a 1,532 SF lot the property provides a flexible footprint for a variety of development concepts. The site also benefits from valuable signage exposure, enhancing visibility and branding potential. 548 West 160th Street offers a rare opportunity to create a customized asset in one of Northern Manhattan’s most established and densely populated neighborhoods.

## LOCATION OVERVIEW

Ideally situated between Amsterdam Avenue and Broadway, 548 West 160th Street is located in the heart of Washington Heights, one of Northern Manhattan’s most dynamic and densely populated neighborhoods. The property benefits from strong pedestrian traffic and excellent visibility along West 160th Street, surrounded by a vibrant mix of residential buildings, neighborhood retailers, restaurants, and service-oriented businesses. Nearby tenants include Planet Fitness, McDonald’s, Dunkin’, GNC, TD Bank, Metro by T-Mobile, Cricket Wireless, and numerous local dining and retail establishments, making this a highly attractive location for future development, commercial users, and long-term investors alike.

Address	548 West 160th Street, New York, NY 10032
Location	Between Broadway & Amsterdam Avenue
Block/Lot	2118 / 19
Zoning	R7-2
Lot Dimensions	15.33 FT x 99.92 FT
Lot Size	1,532 SF
Building Class	G7
Delivered	Vacant and Ready for Development
Tax Class	4



Proposed Rendering



Street View

**\$1,099,000**

Offered At

**1,532 SF**

Lot Size

**R7-2**

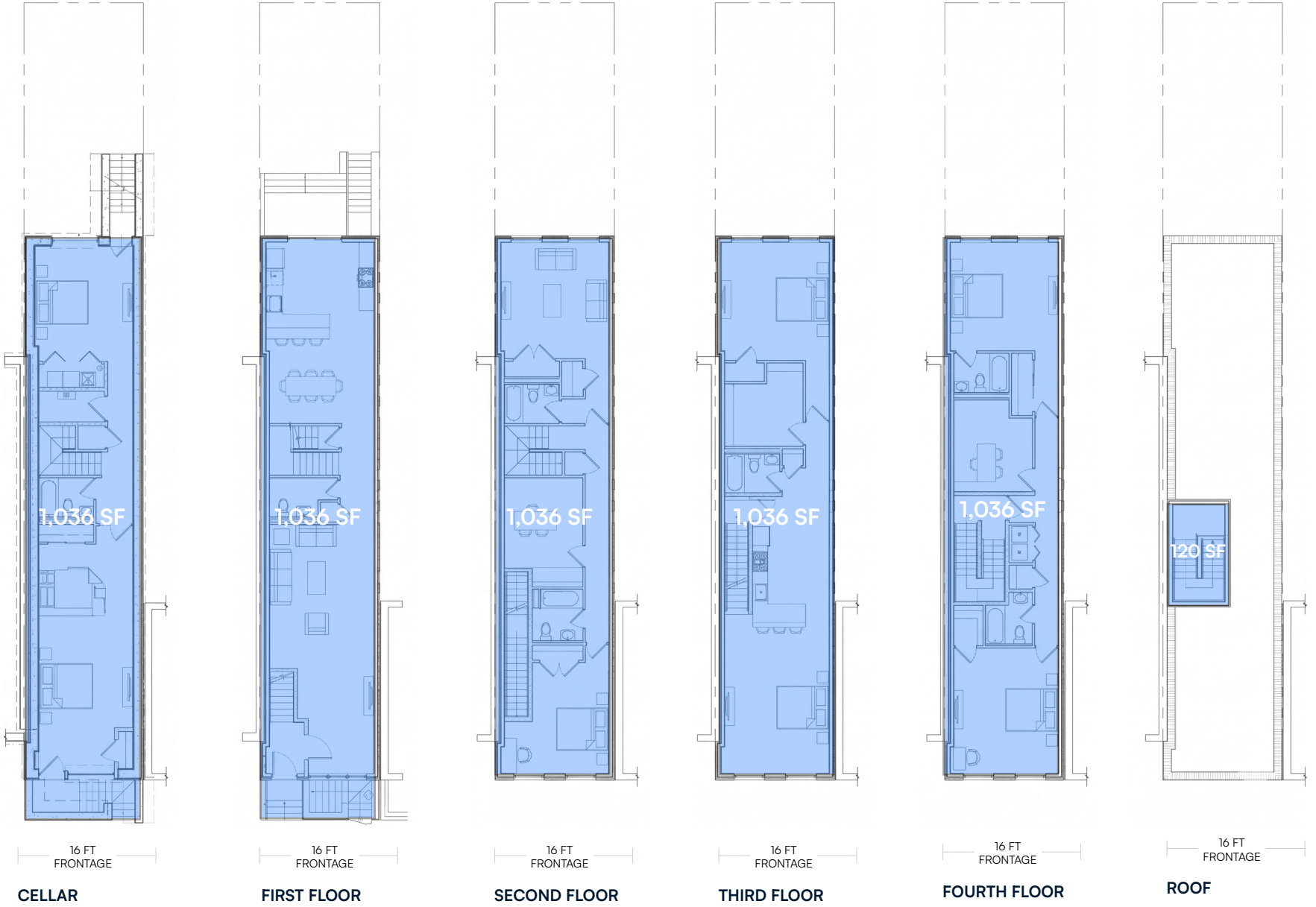
Zoning

SHLOMI BAGDADI  
212.433.3355 x101  
sb@tristatecr.com

JACK SARDAR  
212.433.3355 x106  
jack.s@tristatecr.com

CHARLES ELBAZ  
212.433.3355 x1014  
charles.e@tristatecr.com

# PROPOSED FLOOR PLANS



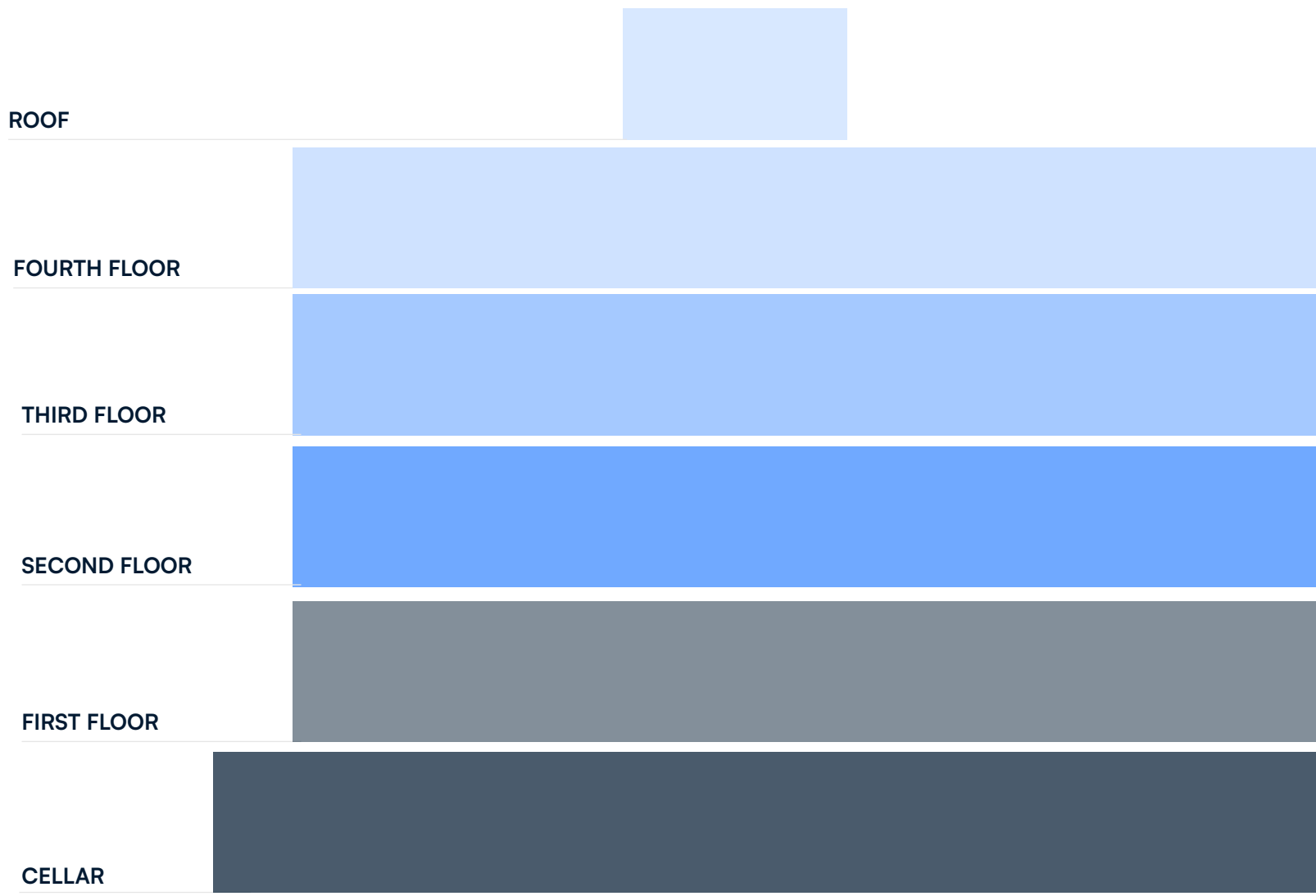
All square footages are approximate

**SHLOMI BAGDADI**  
 212.433.3355 x101  
 sb@tristatecr.com

**JACK SARDAR**  
 212.433.3355 x106  
 jack.s@tristatecr.com

**CHARLES ELBAZ**  
 212.433.3355 x1014  
 charles.e@tristatecr.com

# PROPOSED STACKING PLAN



**SHLOMI BAGDADI**  
212.433.3355 x101  
sb@tristatecr.com

**JACK SARDAR**  
212.433.3355 x106  
jack.s@tristatecr.com

**CHARLES ELBAZ**  
212.433.3355 x1014  
charles.e@tristatecr.com

# TRANSPORTATION AND TAX MAP

## NEAREST TRANSIT

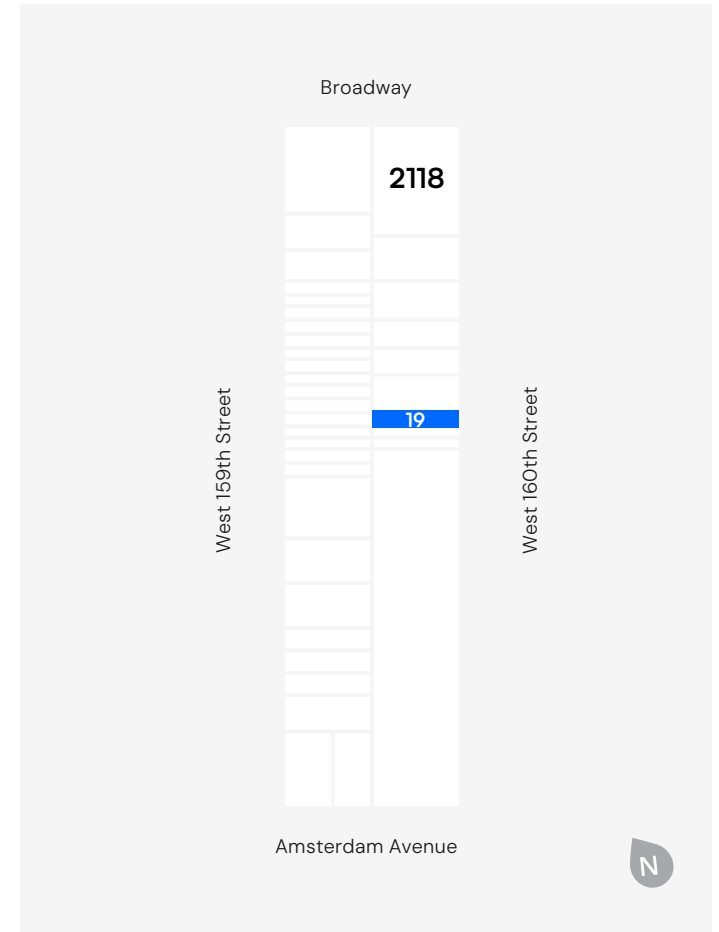
**A C** Trains at 163rd Street – Amsterdam Avenue

**1** Train at 157th Street

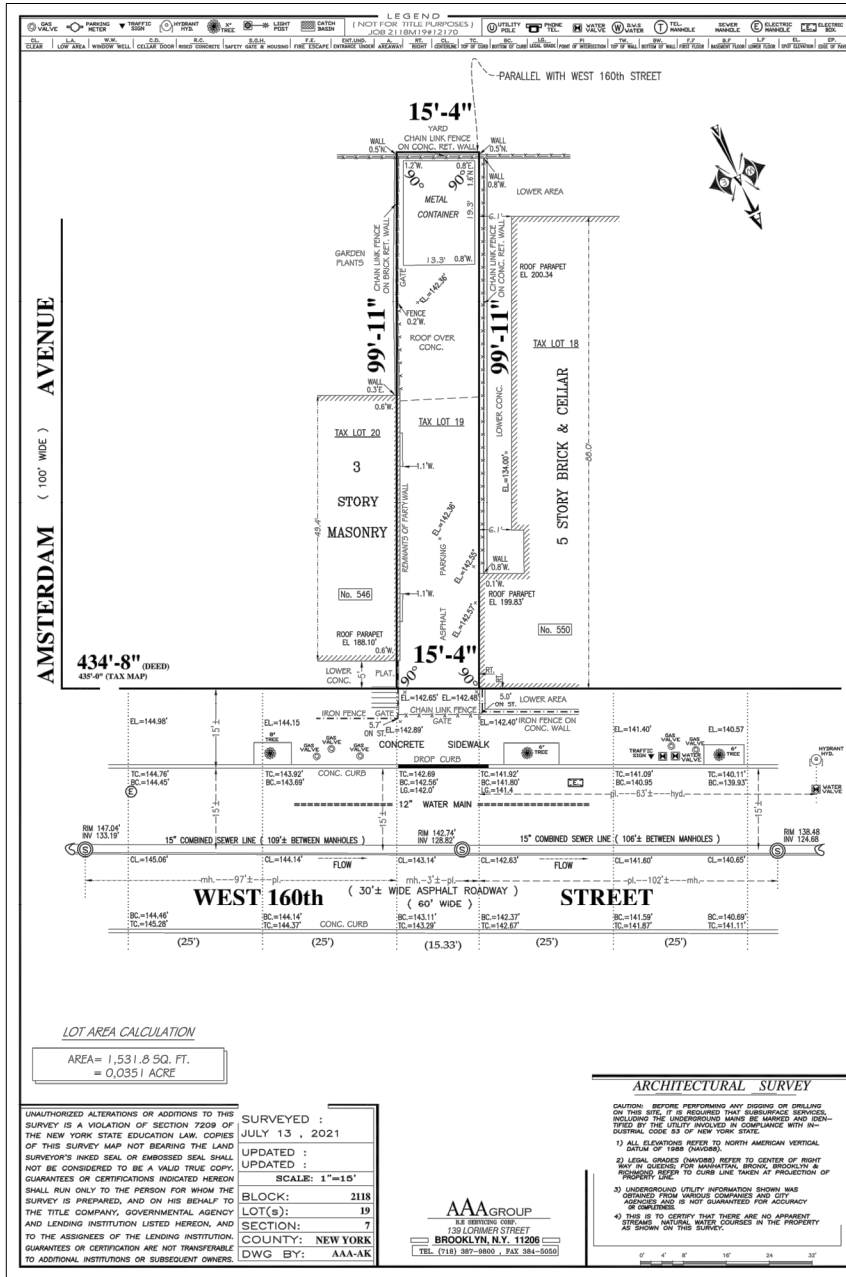
**M5 M4 M100 M3 M101 Bx6-SBS Bx6** Bus Lines



## TAX MAP



# SURVEY

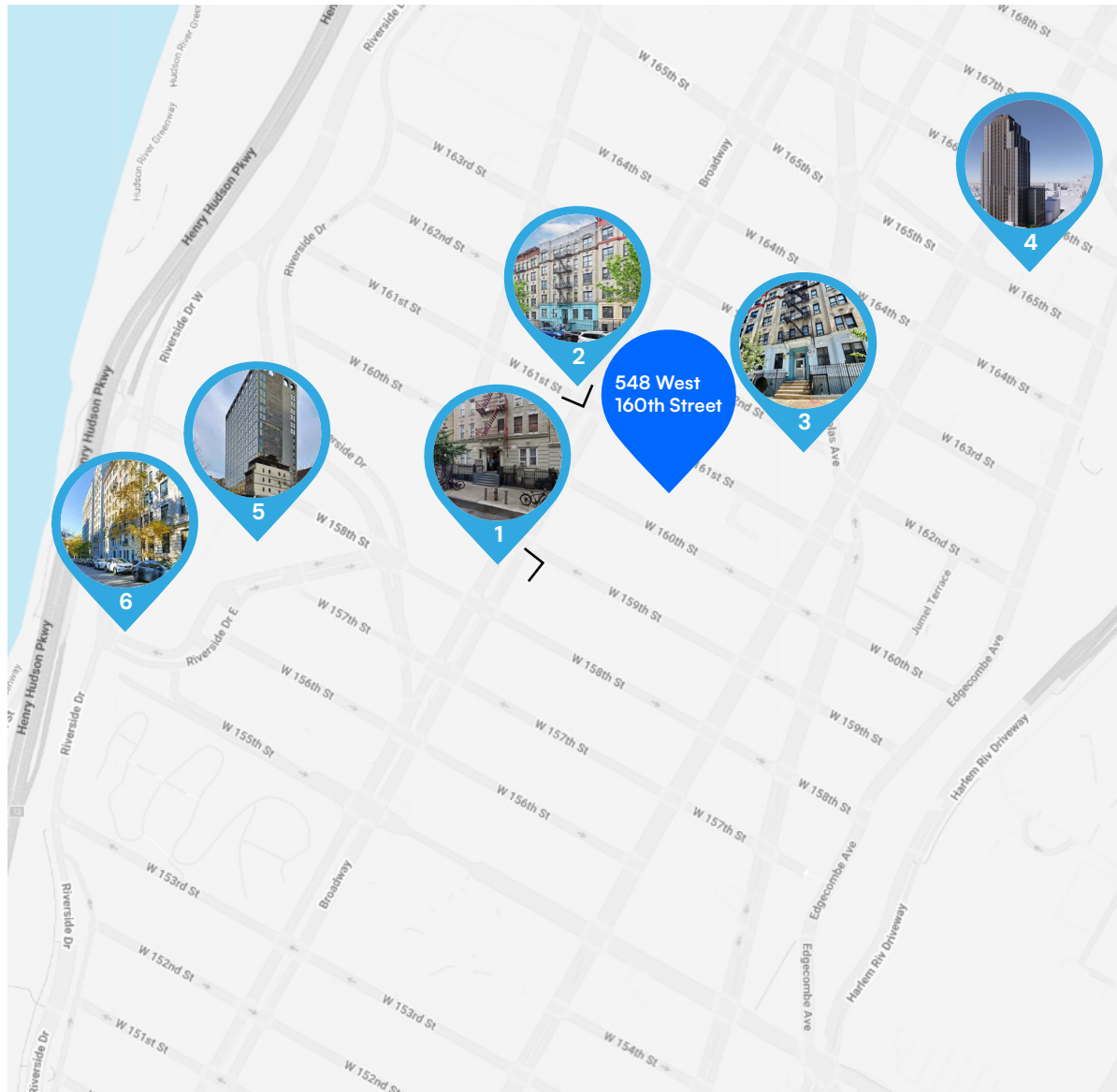


SHLOMI BAGDADI  
 212.433.3355 x101  
 sb@tristatecr.com

JACK SARDAR  
 212.433.3355 x106  
 jack.s@tristatecr.com

CHARLES ELBAZ  
 212.433.3355 x1014  
 charles.e@tristatecr.com

## DEVELOPMENTS IN THE AREA



## BUILDING DEVELOPMENTS

- 1. 552 West 160th Street** Multifamily property on a 3,747 SF lot with redevelopment potential along the same block frontage.
- 2. 547-549 West 160th Street** Residential apartment property spanning multiple lots on the block.
- 3. 543-545 West 160th Street** Residential cooperative building located within the immediate vicinity.
- 4. 467-473 West 165th Street** Planned 28-story residential tower totaling approximately 216,000 square feet with 276 residential units and extensive amenity space.
- 5. 636 West 158th Street** Newly completed 17-story residential building known as Artifact No. 636, delivering 120 apartments and affordable housing units.
- 6. 611 West 156th Street** Residential housing redevelopment and management project located near Columbia Presbyterian and the Broadway corridor.



**ADVISORS  
BEFORE  
BROKERS**

## LOCATION OVERVIEW

### WASHINGTON HEIGHTS

Rich in history, culture, and community character, Washington Heights is one of Manhattan's most vibrant and diverse neighborhoods. Known for its lively streets, strong residential base, and thriving commercial corridors, the area offers a unique blend of local businesses, national retailers, and authentic dining destinations. Residents and visitors benefit from excellent public transportation, convenient access to major roadways, and a dynamic urban environment that continues to attract new investment and development. With its deep cultural roots, growing retail presence, and proximity to major employment centers throughout Manhattan, Washington Heights remains a highly desirable destination for residents, businesses, and investors alike.

### POINTS OF INTEREST

- Highbridge Park
- Fort Tryon Park
- The Met Cloisters
- George Washington Bridge

**SHLOMI BAGDADI**  
212.433.3355 x101  
sb@tristatecr.com

**JACK SARDAR**  
212.433.3355 x106  
jack.s@tristatecr.com

**CHARLES ELBAZ**  
212.433.3355 x1014  
charles.e@tristatecr.com

548 WEST 160TH STREET, NEW YORK, NY 10032

**1,532 SF**

# WASHINGTON HEIGHTS DEVELOPMENT SITE

Between Broadway & Amsterdam Avenue

For More Information Call: **212.433.3355**

**SHLOMI BAGDADI**  
212.433.3355 x101  
sb@tristatecr.com

**JACK SARDAR**  
212.433.3355 x106  
jack.s@tristatecr.com

**CHARLES ELBAZ**  
212.433.3355 x1014  
charles.e@tristatecr.com

**TSC.**