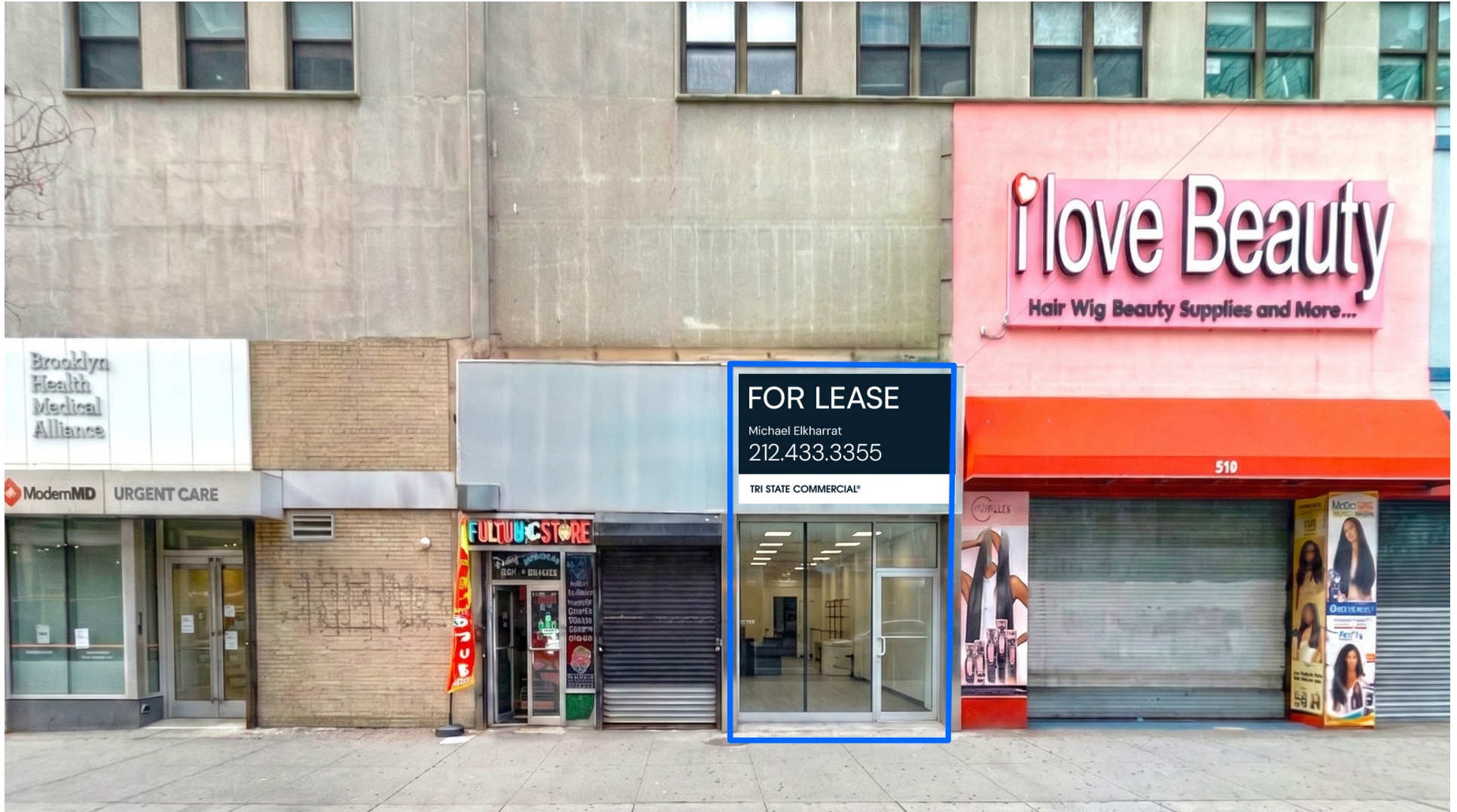


510 FULTON STREET, BROOKLYN, NY 11201

FOR SUBLEASE

# 800 – 1,600 SF RARE RETAIL STOREFRONT AT THE HEART OF FULTON MALL

Between Bond Street & Hanover Place



**SHLOMI BAGDADI**  
212.433.3355 x101  
sb@tristatecr.com

**MICHAEL ELKHARRAT**  
212.433.3355 x216  
michael.e@tristatecr.com

**TRI STATE COMMERCIAL®**

## PROPERTY SUMMARY

### LOCATION

Located in the Downtown Brooklyn neighborhood of Brooklyn.

### HIGHLIGHTS

- High Visibility Storefront
- Unmatched Transit Access + Foot Traffic
- One of Brooklyn’s Most Active Retail Corridors
- Fast Access to BQE (I-278)

### TRANSPORTATION

**B D N Q R W** Trains at DeKalb Avenue

**N R W** Trains at Jay Street – MetroTech

**2 3** Trains at Hoyt Street

**B54 B38 B26 B25 B52 B103 B67 B45 B41** Bus Lines

### NEIGHBORS

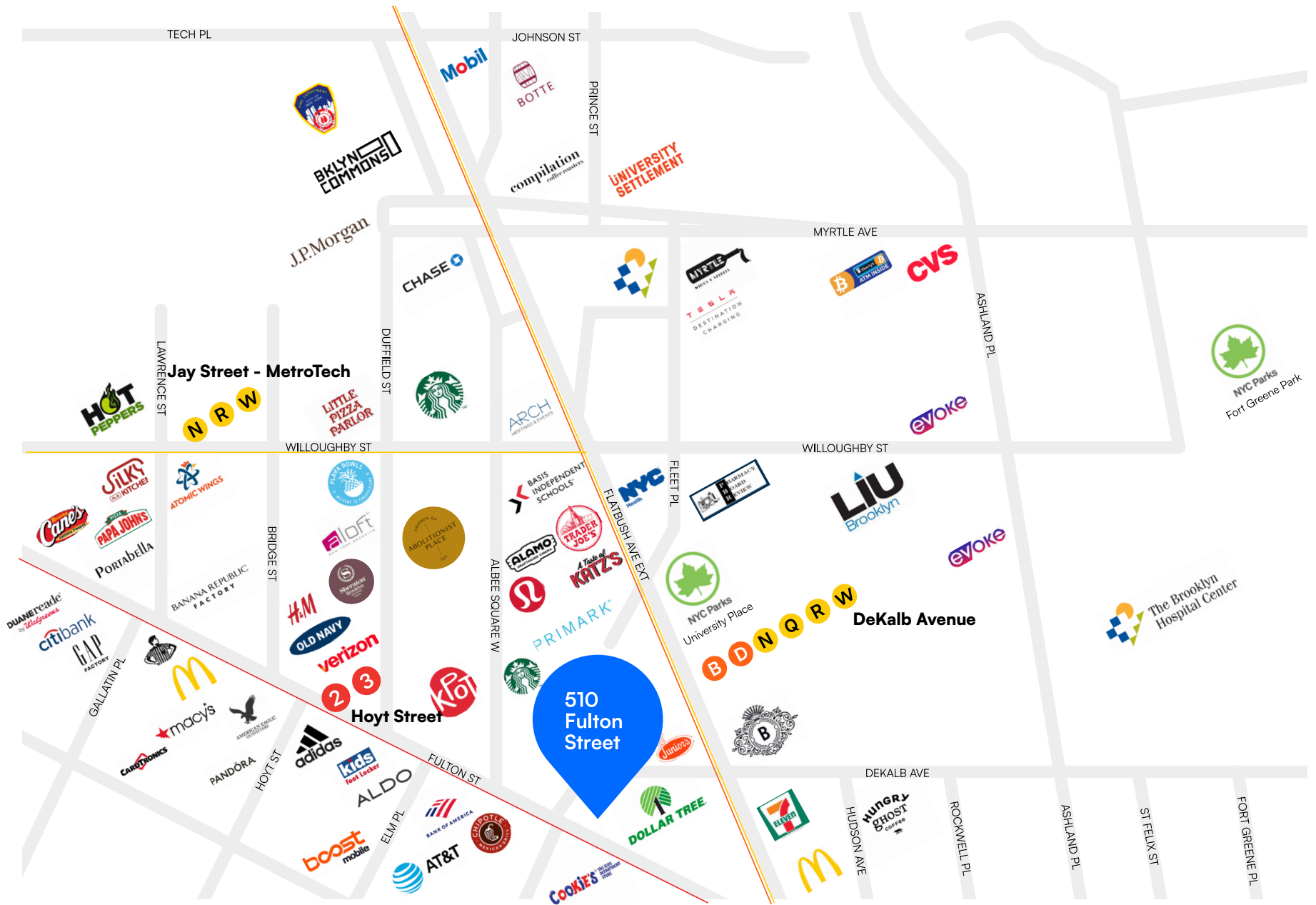
Dunkin’, IHOP, Starbucks, Old Navy, Burlington, Pandora Jewelry, Champs Sports, Foot Locker, Banana Republic Factory Store, American Eagle, Chipotle, Stack’d Burger, Wonder Downtown Brooklyn, Chelsea Piers Fitness, Fulton Hot Dog King, Cadet Athletic Performance, Beauty 35, KPOT Korean BBQ & Hot Pot, Gap Factory, and more!



# PROPERTY PHOTOS



# RETAIL MAP



510 FULTON STREET, BROOKLYN, NY 11201

# 800 – 1,600 SF RARE RETAIL STOREFRONT AT THE HEART OF FULTON MALL

Between Bond Street & Hanover Place

For Pricing Call: **212.433.3355**

**SHLOMI BAGDADI**  
212.433.3355 x101  
sb@tristatecr.com

**MICHAEL ELKHARRAT**  
212.433.3355 x216  
michael.e@tristatecr.com

**TSC.**