

505 UNION AVENUE, BROOKLYN, NY 11211

FOR LEASE

2,320 SF RETAIL SPACE WITH GLASS FRONTAGE

Between North 8th Street & Meeker Avenue



SHLOMI BAGDADI
212.433.3355 x101
sb@tristatecr.com

MICHAEL ELKHARRAT
212.433.3355 x216
michael.e@tristatecr.com

TRI STATE COMMERCIAL®

PROPERTY SUMMARY

LOCATION

Located in the Williamsburg neighborhood of Brooklyn.

HIGHLIGHTS

- Situated at The Base of a Modern Boutique Development With 23 Luxury Homes
- Strong Foot Traffic
- Glass Frontage

TRANSPORTATION

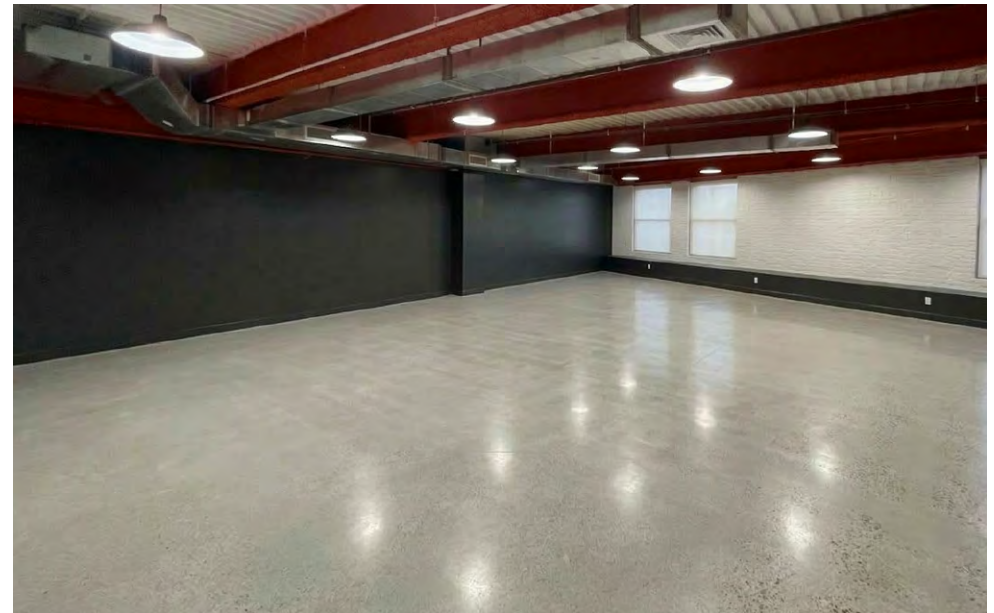
 Train at Lorimer Street

 Train at Metropolitan Avenue

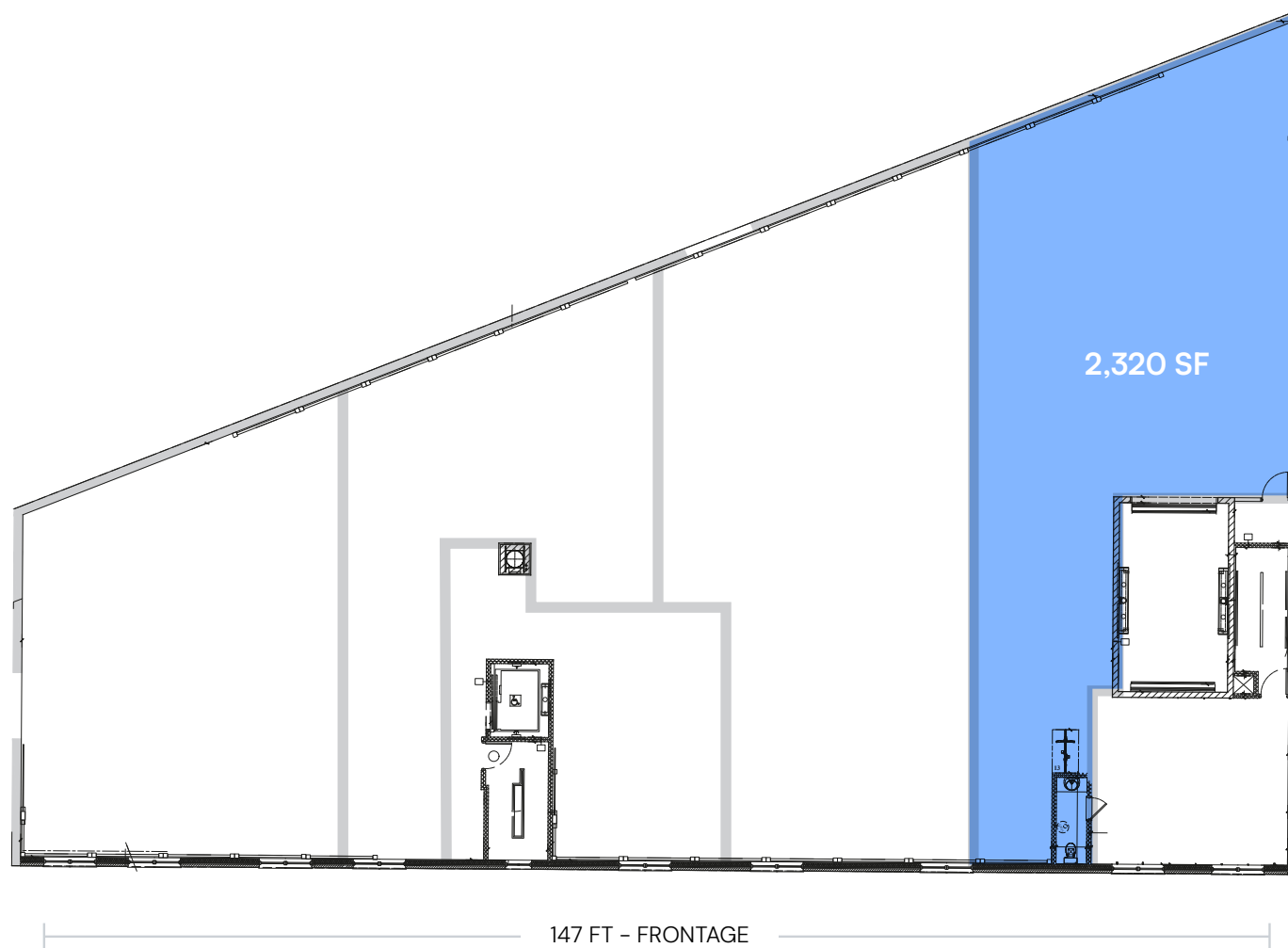
    Bus Lines

NEIGHBORS

Dunkin', The Penny Williamsburg, Best Pizza, Blue Brown Cafe, The Mount Carmel Early Childhood Center, Balkan Grind, Bamonte's, Glory Days, Lilia, Patisserie Tomoko, Juicery Kitchen, The McCarren, Casa Pública, The Exley, Mya Coffee, Veselka Williamsburg, Union Pool, and more!



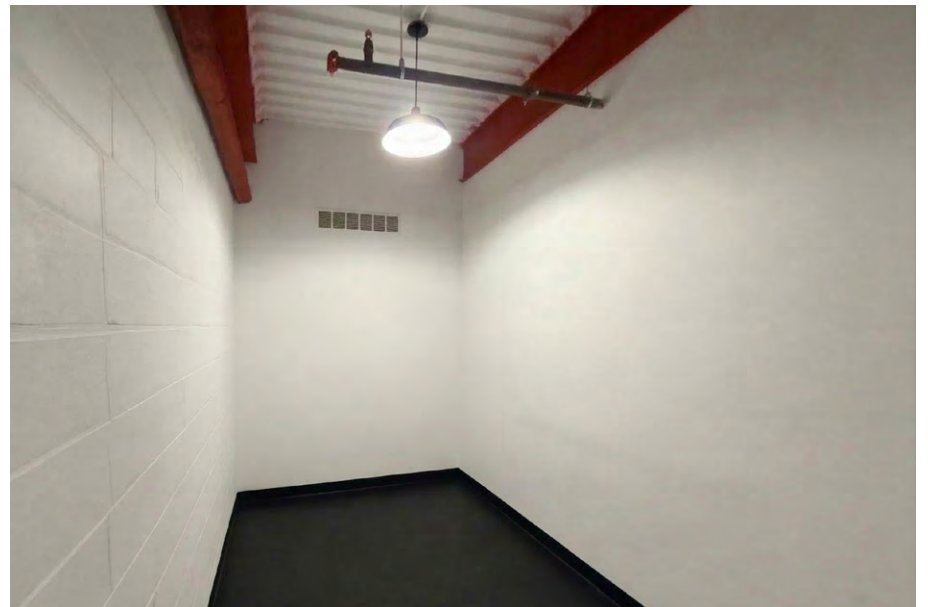
FLOOR PLANS



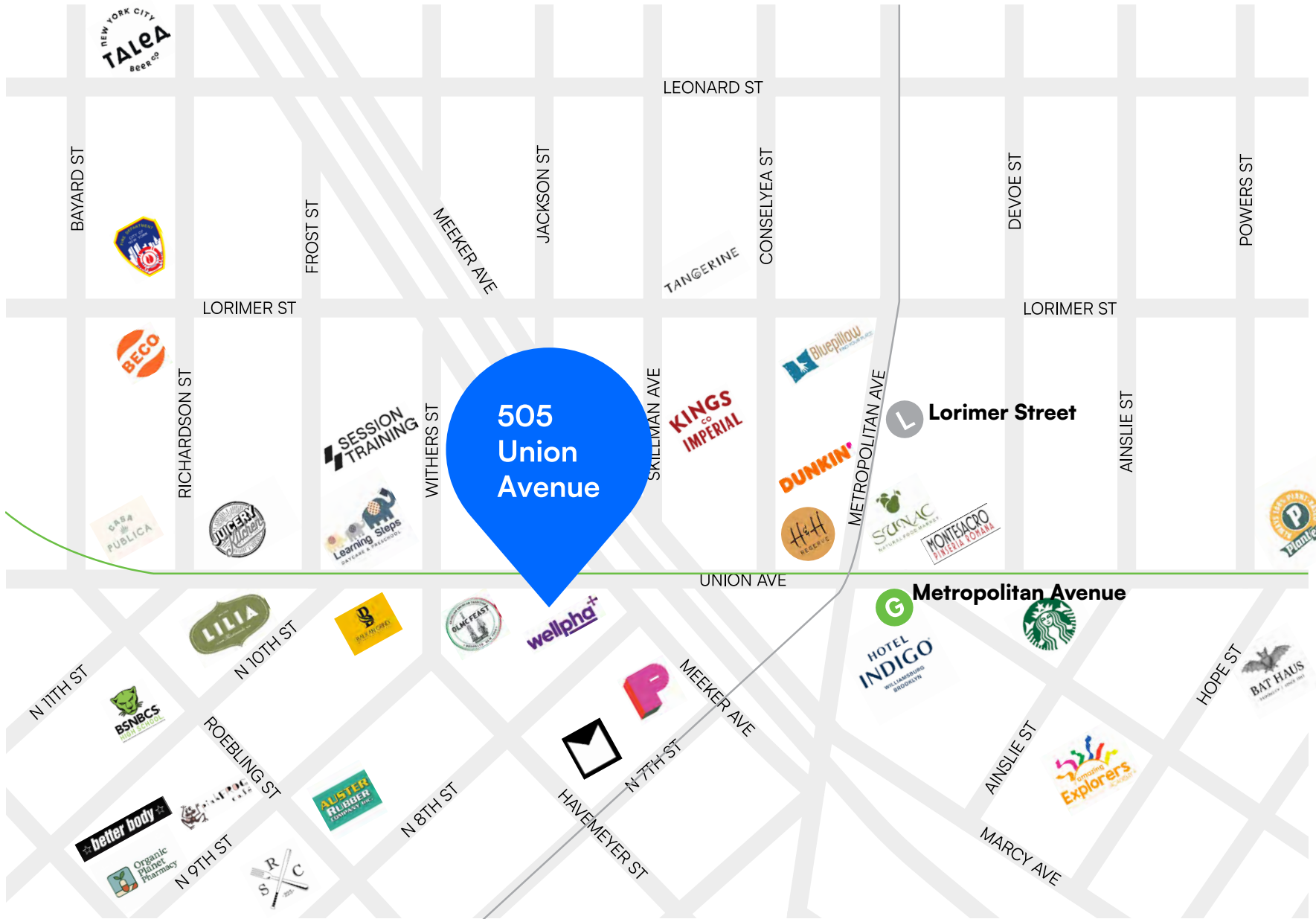
FIRST FLOOR

All square footages are approximate

PROPERTY PHOTOS



RETAIL MAP





**PLACE
YOURSELF
ON THE
WILLIAMSBURG
MAP**

LOCATION OVERVIEW

WILLIAMSBURG

Once an industrial waterfront district, Williamsburg has evolved into one of Brooklyn's most energetic and trendsetting neighborhoods, where historic character blends with a thriving arts and culinary scene. Known for its converted warehouses, street art, and creative culture, the area attracts a diverse mix of residents, entrepreneurs, and visitors. Bedford Avenue serves as the neighborhood's commercial heart, lined with independent boutiques, cafés, acclaimed restaurants, music venues, and galleries that contribute to Williamsburg's distinctive identity. With convenient access to Manhattan via the L train and East River ferry, along with ongoing residential and mixed-use development, the neighborhood maintains a constant flow of foot traffic and offers a vibrant setting for retail, hospitality, and creative businesses to flourish.

POINTS OF INTEREST

- Domino Park
- Williamsburg Bridge
- Brooklyn Brewery
- McCarren Park

DEMOGRAPHICS

Within a one-mile radius of the property

65,930

Total Households

154,049

People

\$141,215

Avg Household Income

*Source: walkscore.com

TSC.

505 UNION AVENUE, BROOKLYN, NY 11211

2,320 SF RETAIL SPACE WITH GLASS FRONTAGE

Between North 8th Street & Meeker Avenue

For Pricing Call: **212.433.3355**

SHLOMI BAGDADI
212.433.3355 x101
sb@tristatecr.com

MICHAEL ELKHARRAT
212.433.3355 x216
michael.e@tristatecr.com

TSC.