

500 WEST 22ND STREET, NEW YORK, NY 10011

FOR LEASE

3,600 SF BI-LEVEL RETAIL SPACE WITH 100 FT OF FRONTAGE

Between 10th Avenue & 11th Avenue



SHLOMI BAGDADI
212.433.3355 x101
sb@tristatecr.com

FREDY BAGDADI
212.433.3355 x1003
freddy.b@tristatecr.com

TRI STATE COMMERCIAL®

PROPERTY SUMMARY

LOCATION

Located in the Chelsea neighborhood of Manhattan.

HIGHLIGHTS

- ADA Access to the Lower Level
- 400 Amps Electrical Capacity
- Perfect for Fitness, Hair/Nail Salon, Medical Office, Dog Groomer/Daycare, Education Space, After-School Program User, and More

SPACE DETAILS

- 1,800 SF Ground Floor + 1,800 SF Lower Level
- 100 FT of Wrap-Around Frontage
- 10 FT Ceiling Height - Ground Floor
- 9 FT 3 IN - Lower Level

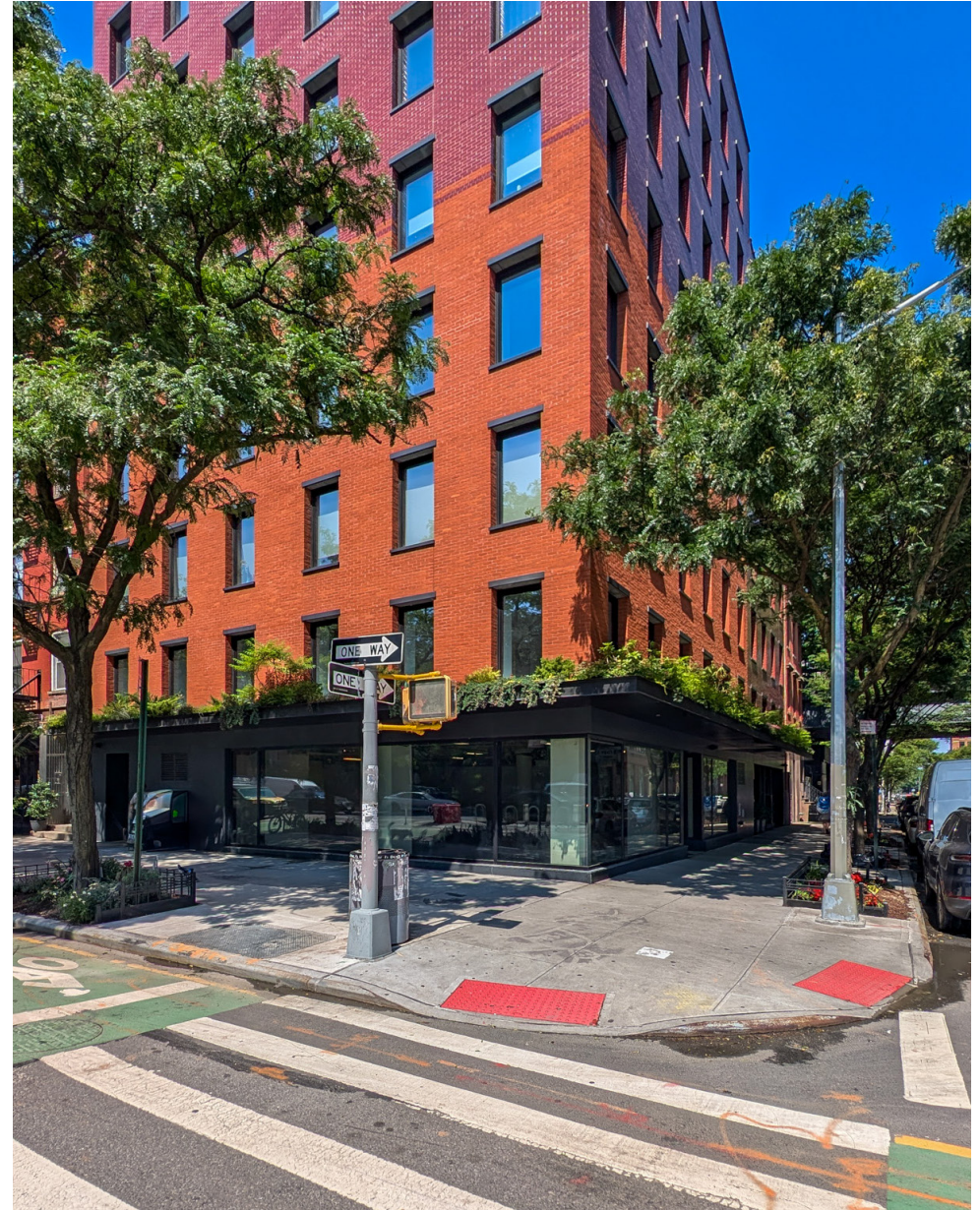
TRANSPORTATION

A C E Trains at 14 Street / 8th Avenue

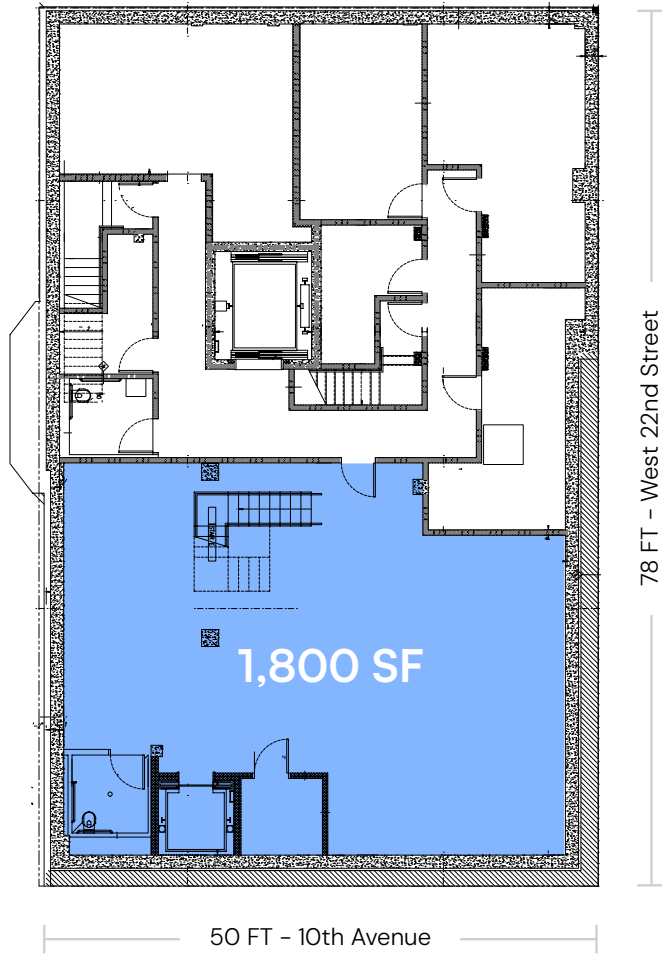
M11 M23-SBS M12 M14D-SBS Bus Lines

NEIGHBORS

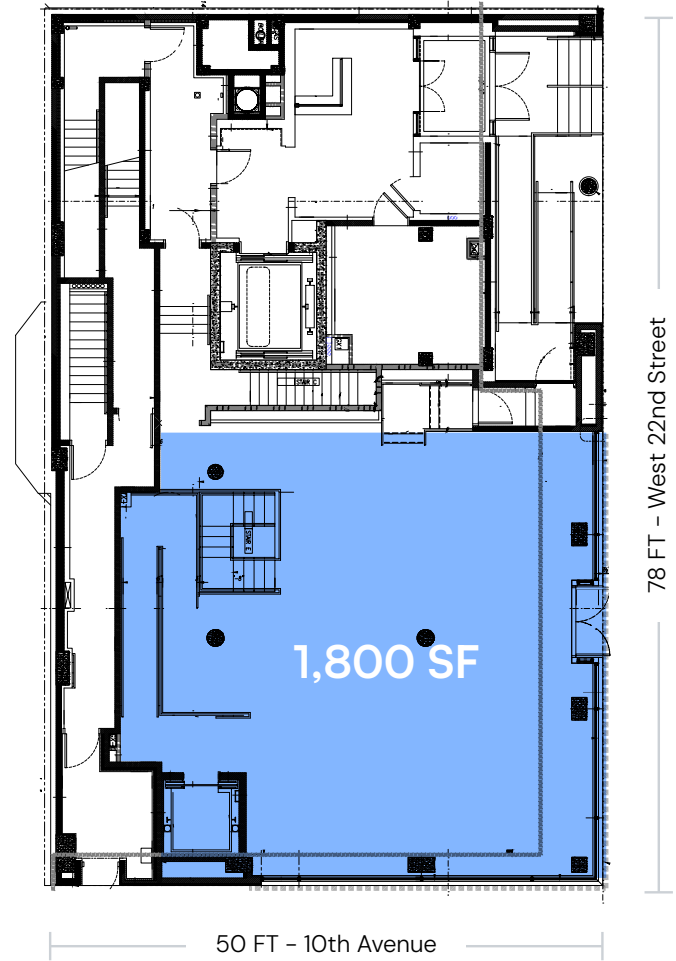
Don Giovanni, New York Burger Co., Pepe Giallo, Harper's Books, 192 Books, Miles McEnery Gallery, Matthew Marks Gallery, Harper's Chelsea 512, Hauser & Wirth, Silas Seandel Studio Inc, Paula Cooper Gallery, David Zwirner Books Shop, Kathryn Markel Fine Arts, Hales Gallery, Cookshop, Fairweather, and more!



FLOOR PLANS



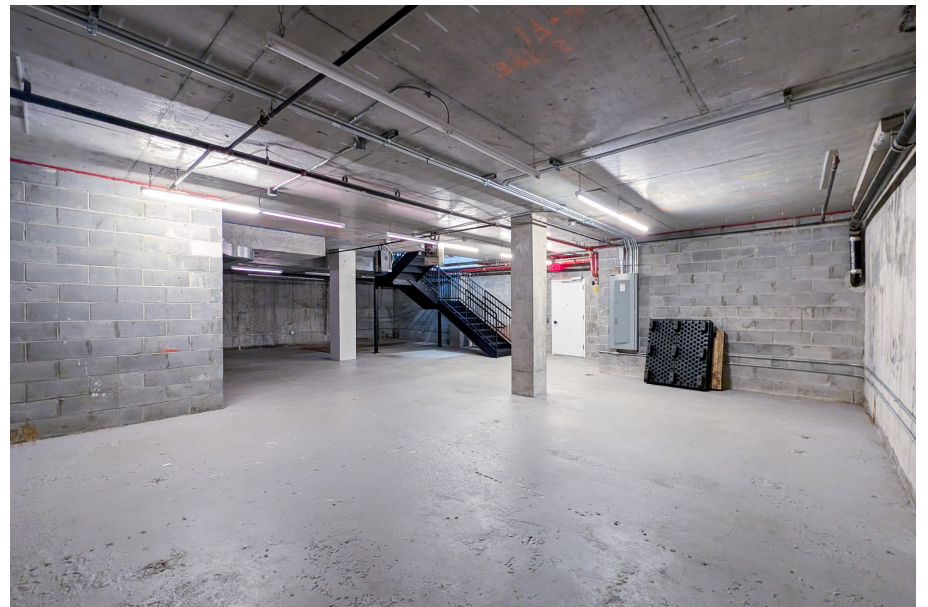
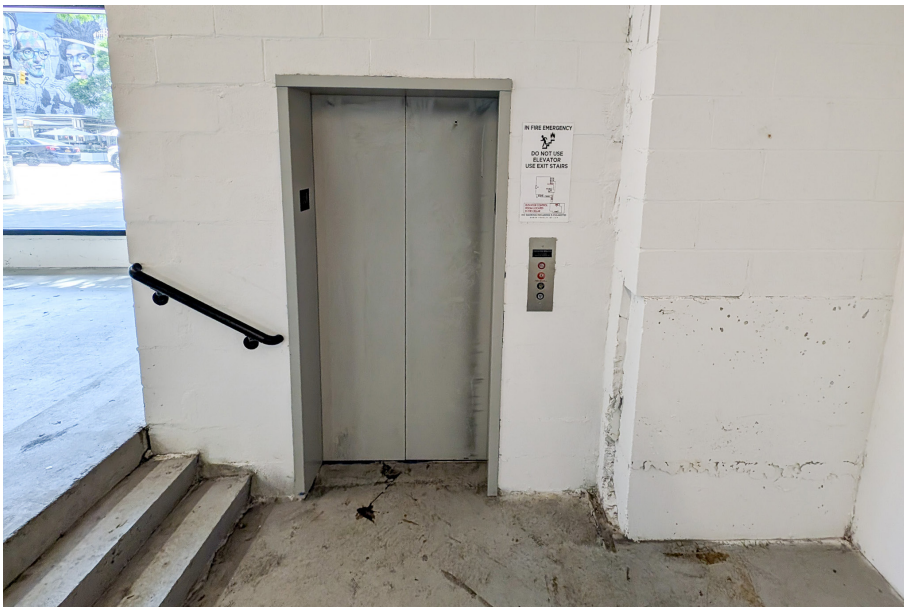
LOWER LEVEL



GROUND FLOOR

All square footages are approximate

PROPERTY PHOTOS



500 WEST 22ND STREET, NEW YORK, NY 10011

3,600 SF BI-LEVEL RETAIL SPACE WITH 100 FT OF FRONTAGE

Between 10th Avenue & 11th Avenue

For Pricing Call: **212.433.3355**

SHLOMI BAGDADI
212.433.3355 x101
sb@tristatecr.com

FREDY BAGDADI
212.433.3355 x1003
freddy.b@tristatecr.com

TSC.