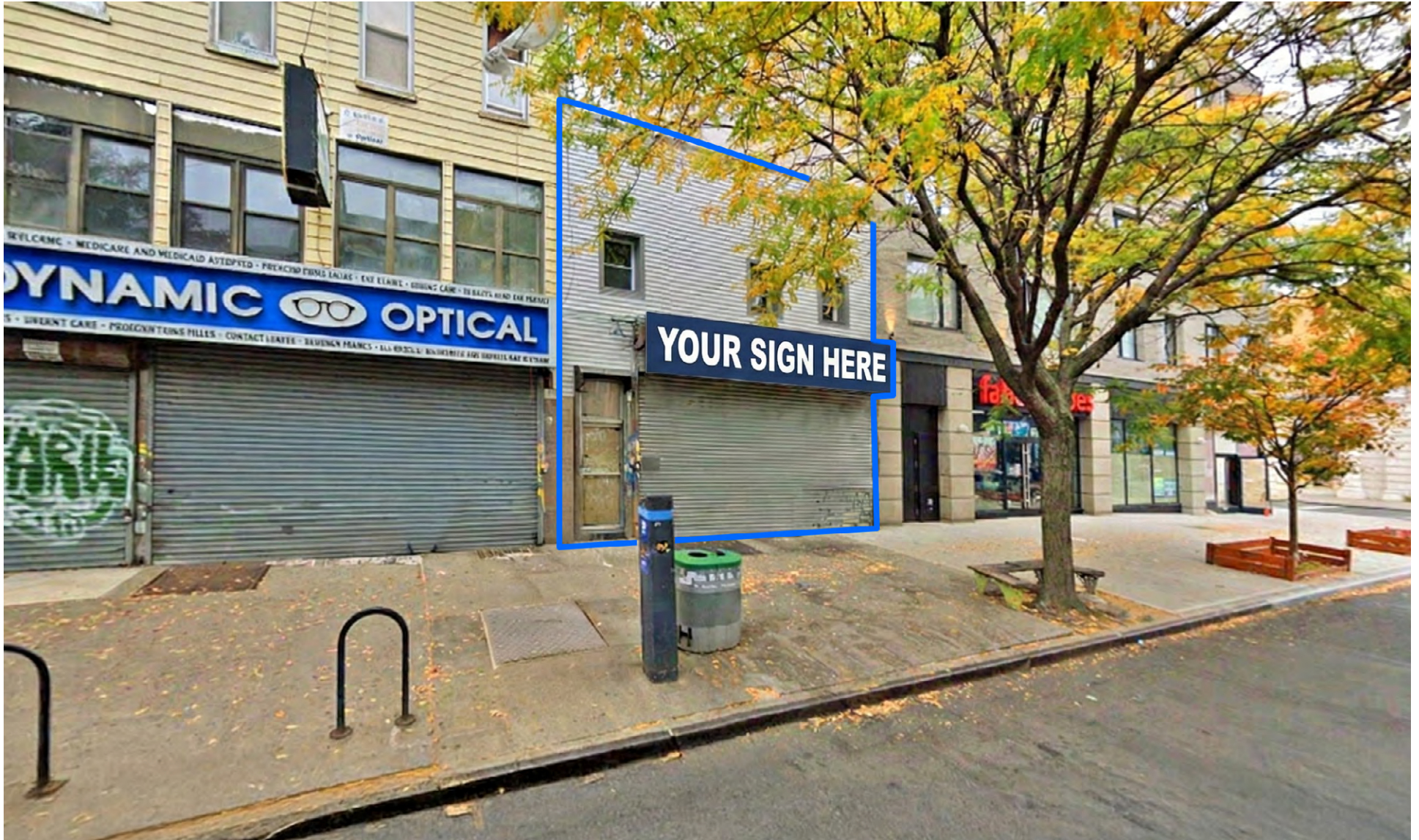


39 GRAHAM AVENUE, BROOKLYN, NY 11206

FOR LEASE

1,400 – 3,900 SF RETAIL AND OFFICE SPACE

Between Varet Street & Cook Street



SHLOMI BAGDADI
212.433.3355 x101
sb@tristatecr.com

SAMUEL SHOUOLA
212.433.3355 x212
samuel.s@tristatecr.com

TRI STATE COMMERCIAL®

PROPERTY SUMMARY

LOCATION

Located in the East Williamsburg neighborhood of Brooklyn.

SPACE DETAILS

- First Floor: 2,500 SF
- Second Floor: 1,400 SF
- Great Frontage
- Surrounded by National Tenants
- Signage Opportunity
- Spaces can be Leased Together or Separately

TRANSPORTATION

J **M** Trains at Flushing Avenue

B43 Bus Line

NEIGHBORS

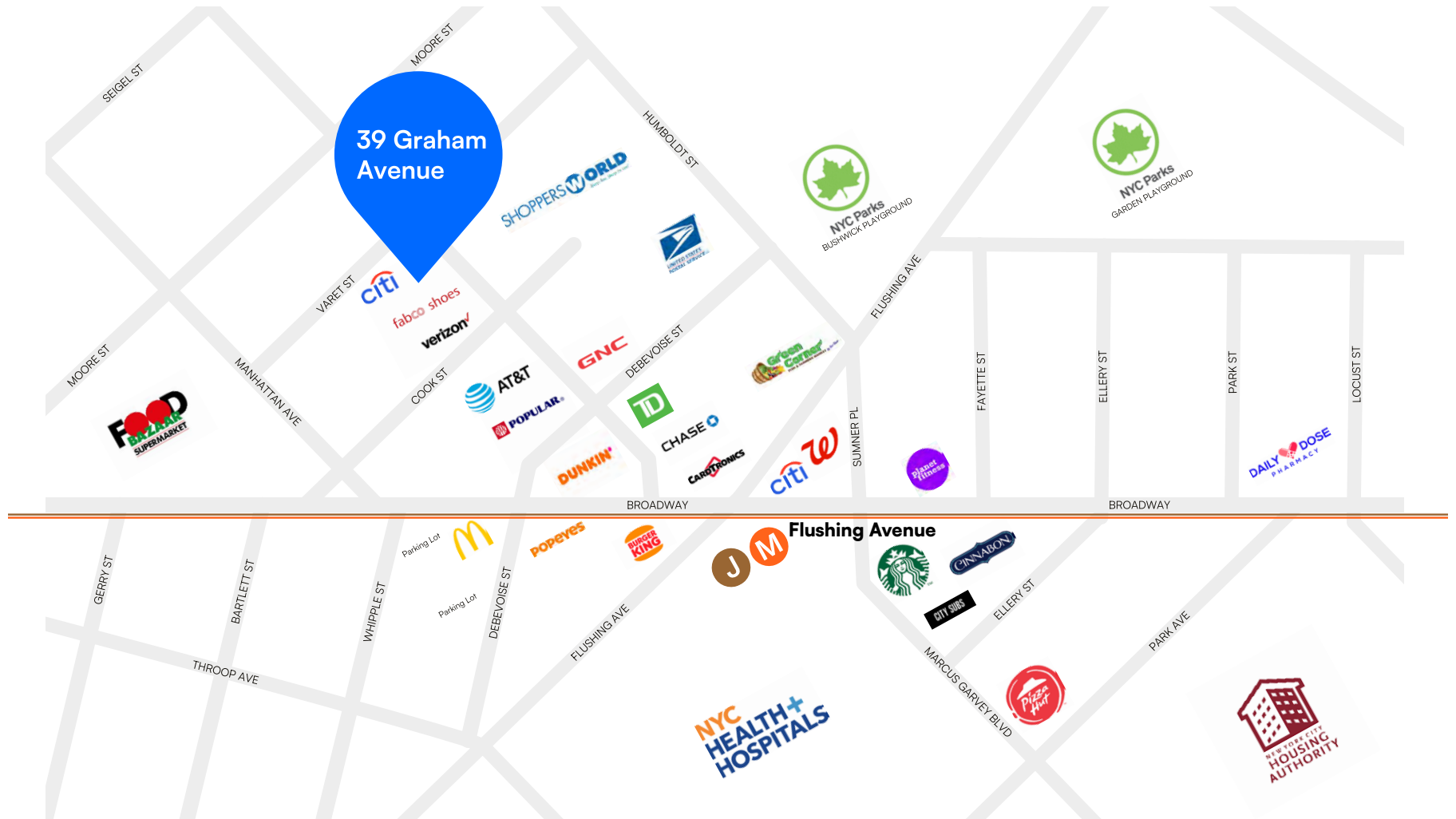
Shoppers World, Fabco Shoes, Jimmy Jazz, GNC, Chase Bank, Burger King, Dunkin', TD Bank, T-Mobile, Popular Bank, Sonic Drive-In, Kidtown, Taco Bell, Walgreens, Planet Fitness, Starbucks, Chipotle, and more!



PROPERTY PHOTOS



RETAIL MAP



39 GRAHAM AVENUE, BROOKLYN, NY 11206

1,400 – 3,900 SF RETAIL AND OFFICE SPACE

Between Varet Street & Cook Street

For Pricing Call: **212.433.3355**

SHLOMI BAGDADI
212.433.3355 x101
sb@tristatecr.com

SAMUEL SHOUELA
212.433.3355 x212
samuel.s@tristatecr.com

TSC.