

38-27 32ND STREET, QUEENS, NY 11106

FOR LEASE

1,700 - 4,400 SF VANILLA BOX RETAIL WITH 20 FT OF FRONTAGE

Between 31st Avenue & Broadway



SHLOMI BAGDADI
212.433.3355 x101
sb@tristatecr.com

RICHARD BABECK
212.433.3355 x119
richard.b@tristatecr.com

TRI STATE COMMERCIAL®

PROPERTY SUMMARY

LOCATION

Located in the Astoria neighborhood of Queens.

SPACE DETAILS

- Vanilla Box
- 9 FT Ceiling
- 20 FT of Frontage

TRANSPORTATION

N W Trains at 39th Avenue

E F M R W Trains at 36th Street

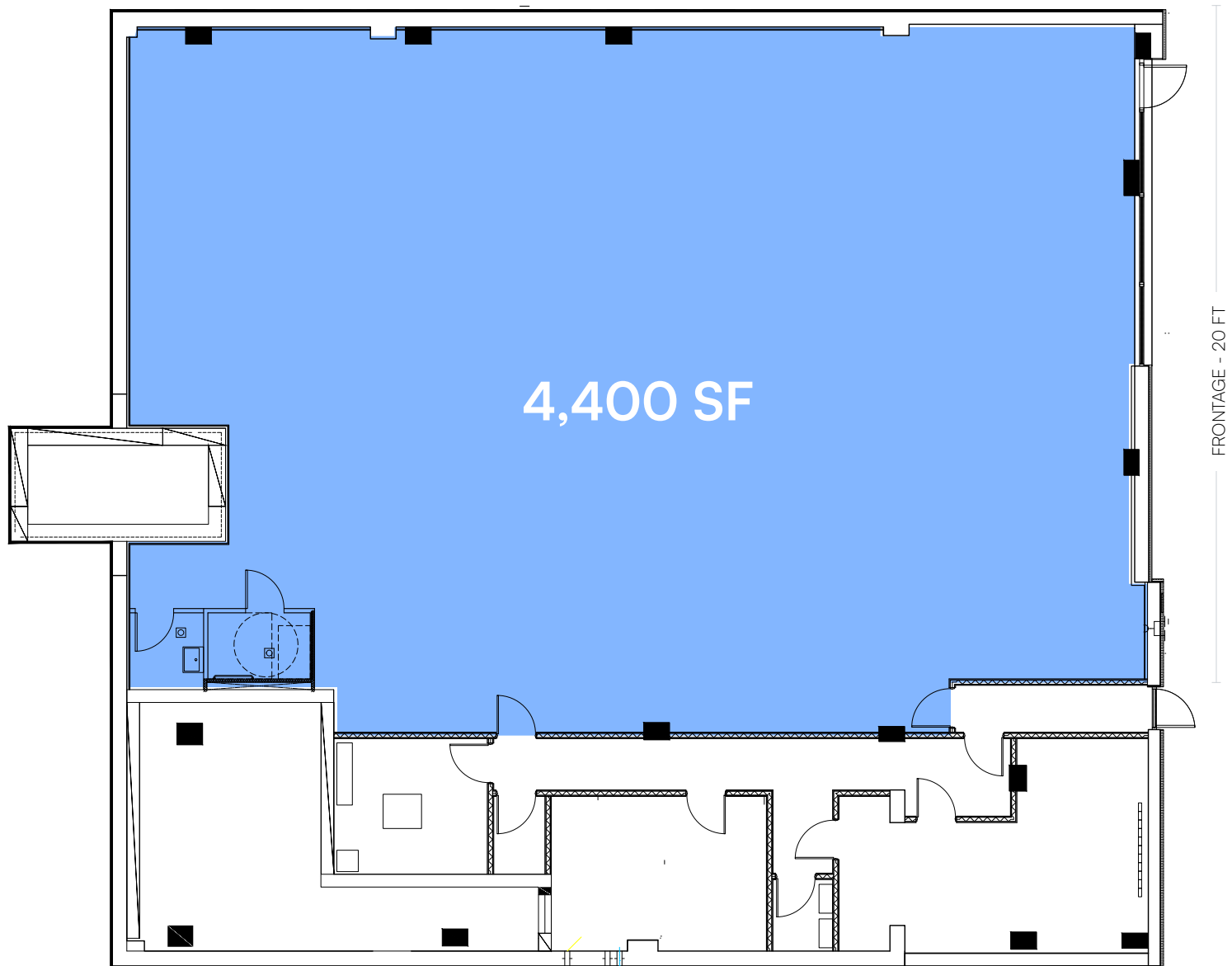
Q102 Q104 Q18 Bus Lines

NEIGHBORS

Starbucks, Citizens, Capital One Bank, Subway, Bahari Estiatorio, Bad Habits, iRoses New York Halsey's, Mom's Kitchen & Bar, Wide Lake 4 Inc, Enthaiice Thai Kitchen, Bar Dalia, Dunkin', Orangetheory Fitness, Dollar Tree, Museum of Nostalgia Mr. Debonair, The Learning Experience, Aliada, Buffalo Wild Wings 'GO', Wine Stop NYC, Parisi Bakery, and more!

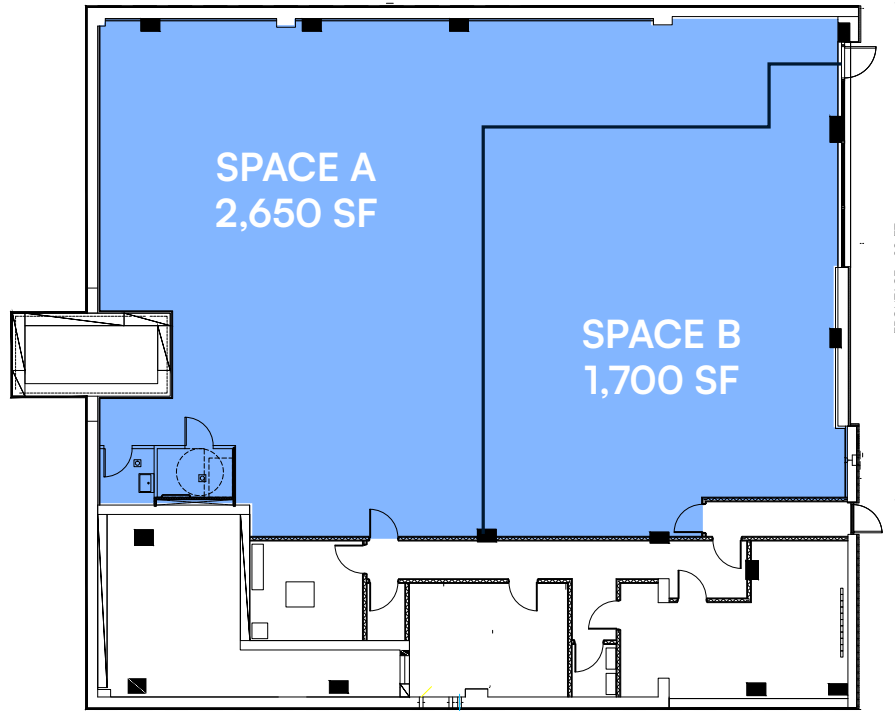


FLOOR PLANS

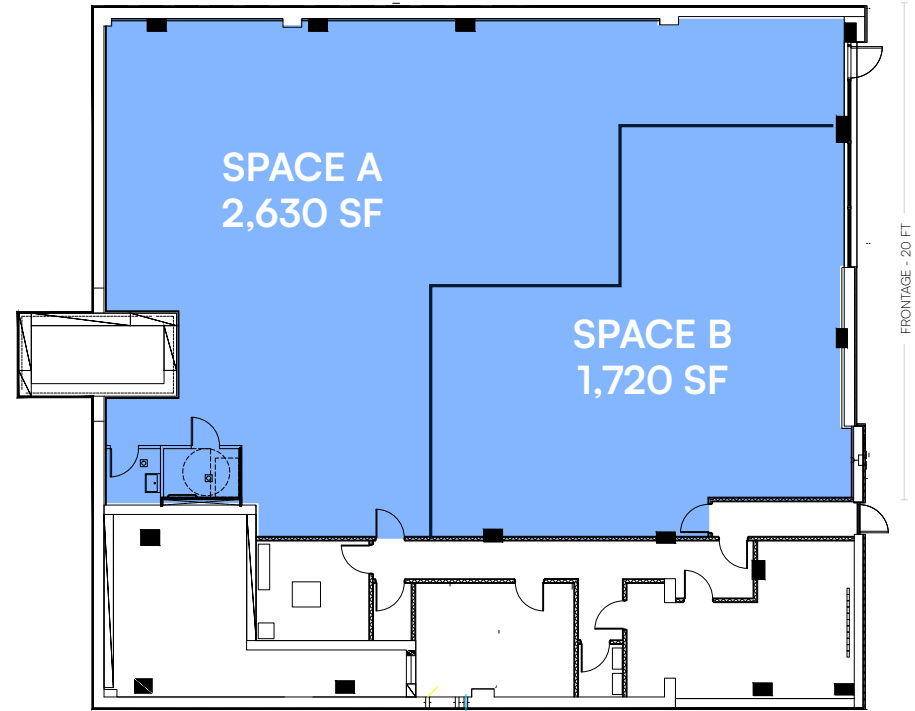


All square footages are approximate

FLOOR PLANS DIVISION OPTION



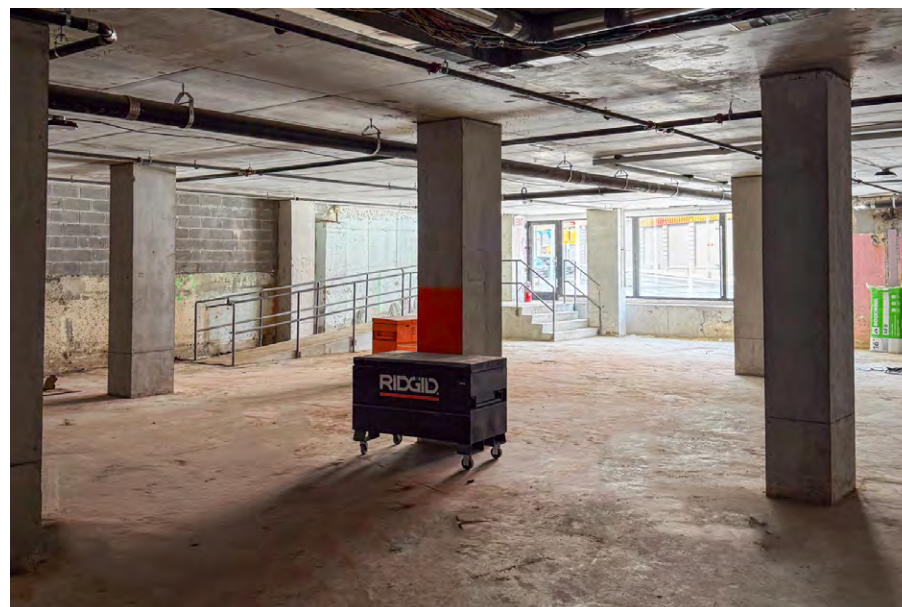
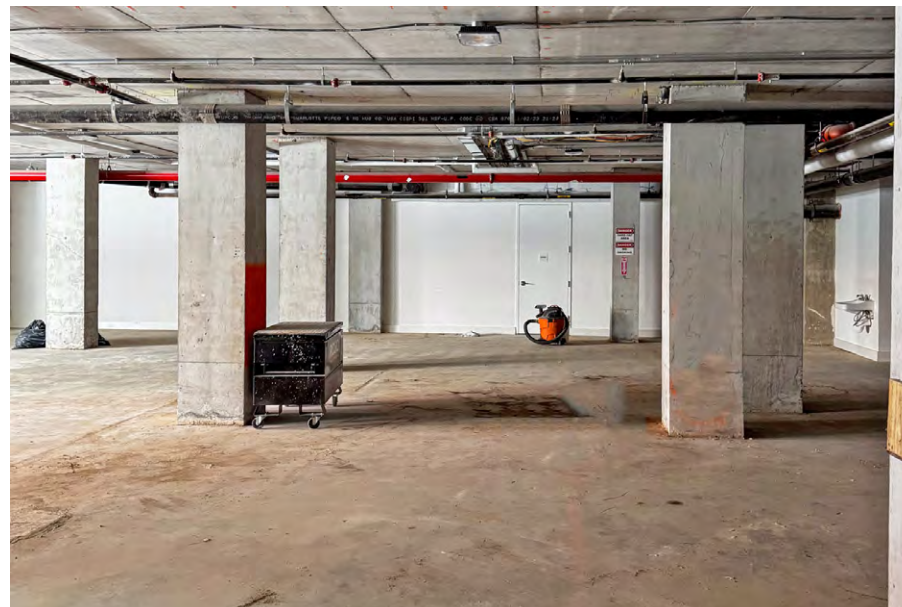
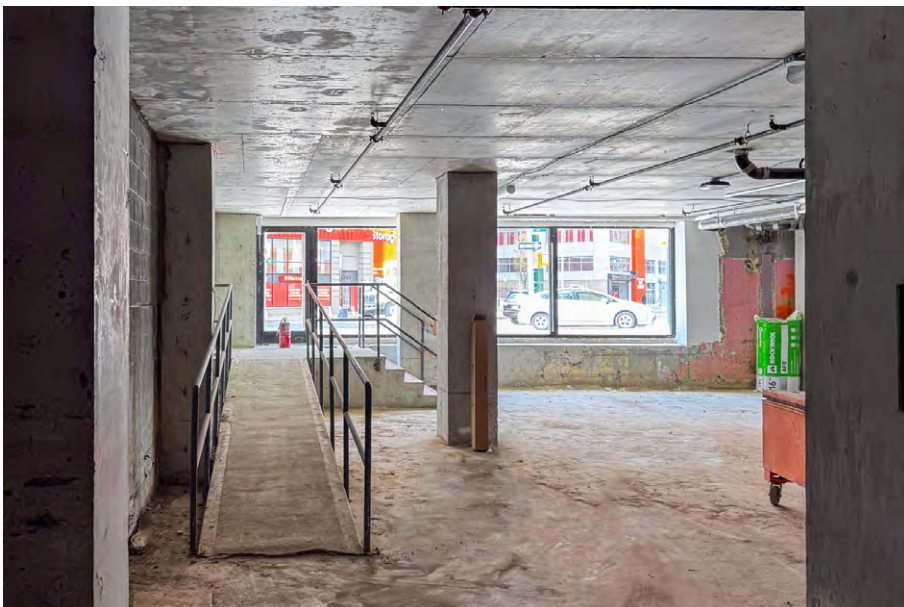
OPTION 1



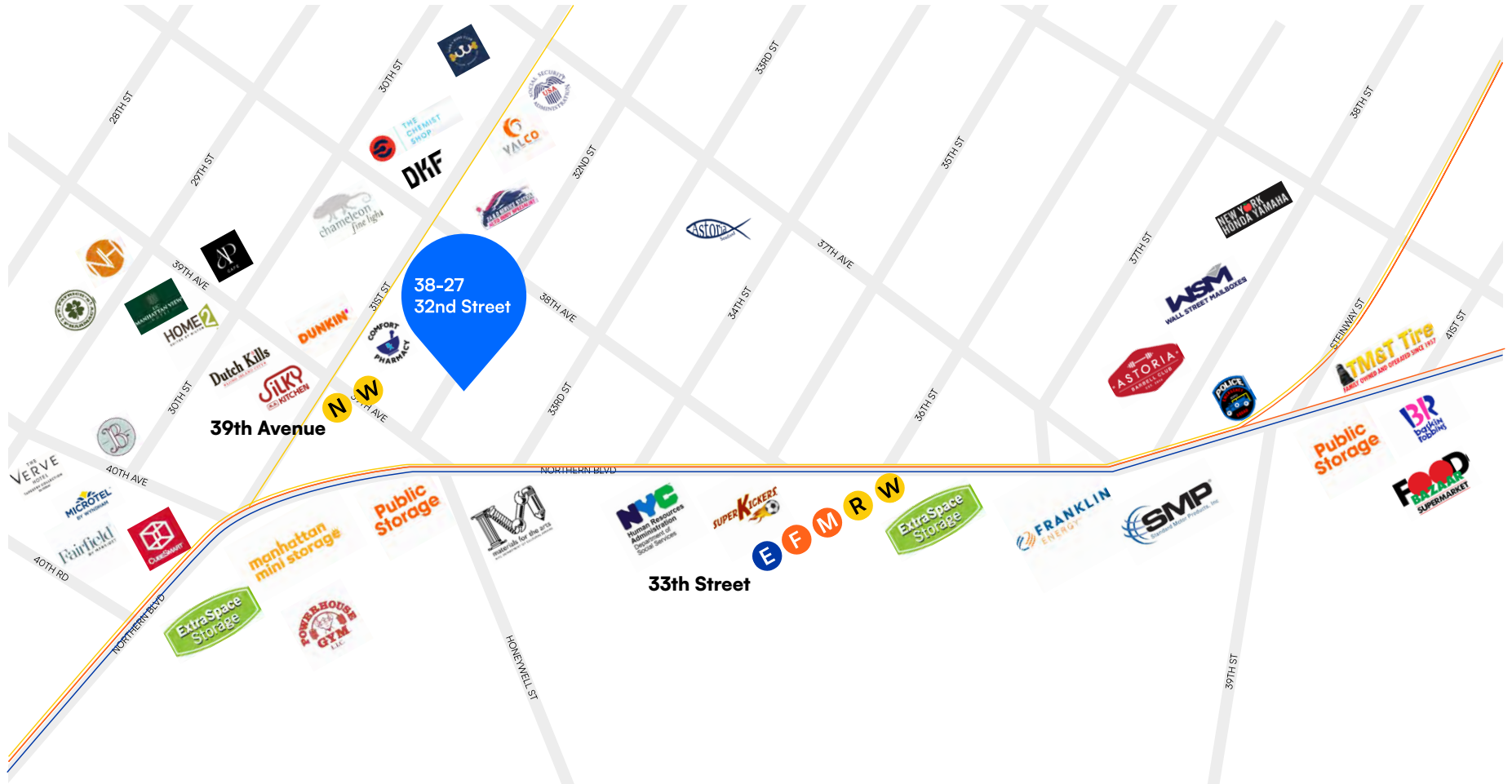
OPTION 2

All square footages are approximate

PROPERTY PHOTOS



RETAIL MAP



38-27 32ND STREET, QUEENS, NY 11106

1,700 – 4,400 SF VANILLA BOX RETAIL WITH 20 FT OF FRONTAGE

Between 31st Avenue & Broadway

For Pricing Call: **212.433.3355**

SHLOMI BAGDADI
212.433.3355 x101
sb@tristatecr.com

RICHARD BABECK
212.433.3355 x119
richard.b@tristatecr.com

TSC.