

3708 BERGENLINE AVENUE, UNION CITY, NJ 07087

FOR LEASE

2,500 SF RETAIL SPACE

Between 37th Street & 38th Street



SHLOMI BAGDADI
212.433.3355 x101
sb@tristatecr.com

JACK SARDAR
212.433.3355 x106
jack.s@tristatecr.com

TRI STATE COMMERCIAL®

PROPERTY SUMMARY

LOCATION

Located on a heavy foot traffic block in the Union City neighborhood of Hudson.

SPACE DETAILS

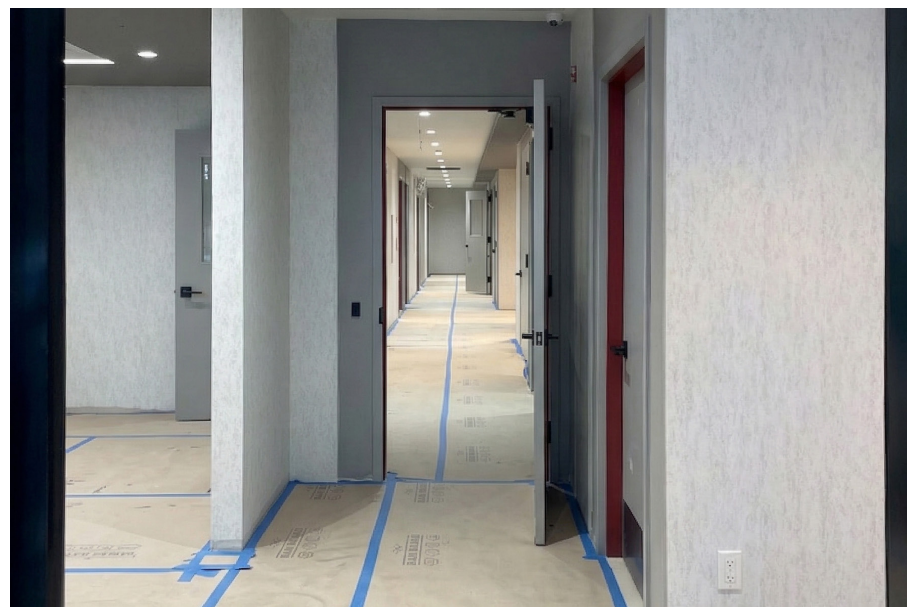
- Medical Office
- Fully Renovated
- Full Basement Space of 2,500 SF
- Located Near Tons of National Tenants

NEIGHBORS

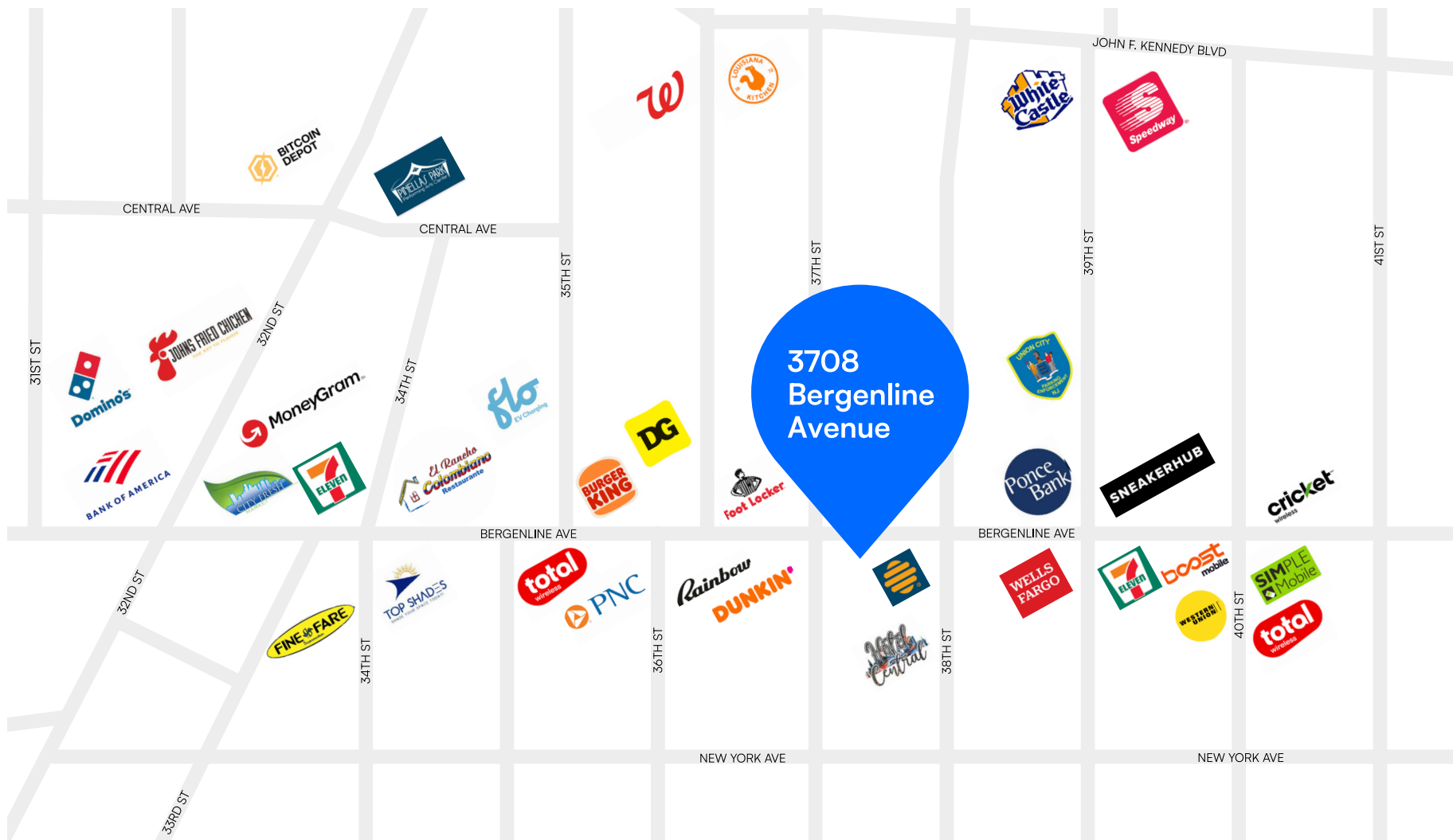
Provident Bank, Dunkin', Rainbow Shops, Wells Fargo Bank, 7-Eleven, Boost Mobile, Dollar General, Foot Locker, Burger King, Walgreens, TD Bank, Fabco Shoes, Popeyes, Taco Bell, McDonald's, White Castle, and more!



PROPERTY PHOTOS



RETAIL MAP



3708 BERGENLINE AVENUE, UNION CITY, NJ 07087

2,500 SF RETAIL SPACE

Between 37th Street & 38th Street

For Pricing Call: **212.433.3355**

SHLOMI BAGDADI
212.433.3355 x101
sb@tristatecr.com

JACK SARDAR
212.433.3355 x106
jack.s@tristatecr.com

TSC.