

327 STAGG STREET, BROOKLYN, NY 11206

FOR LEASE

# 3,300 SF PRIME WILLIAMSBURG SECOND FLOOR OFFICE/RETAIL

Between Union Avenue & Lorimer Street



**SHLOMI BAGDADI**  
212.433.3355 x101  
sb@tristatecr.com

**JOEY SAKKAL**  
212.433.3355 x208  
joey.s@tristatecr.com

**LEON JAJATI**  
212.433.3355 x1012  
leon.j@tristatecr.com

**TRI STATE COMMERCIAL®**

## PROPERTY SUMMARY

### LOCATION

Located in the Williamsburg neighborhood of Brooklyn.

### SPACE DETAILS

- Second Floor
- Vanilla Box
- 2 Private Offices
- Break Room / Kitchen
- Storage Room
- In-Suite Bathrooms
- ADA Compliant
- Backyard
- Elevator
- HVAC System
- Good For Boutique Fitness, Wellness, Medical-Wellness, Beauty Services, Office + Client-Facing Studios, Education-Enrichment, & Private Event-Workshop Studios

### TRANSPORTATION

 Train at Grand Street

    Bus Lines

### NEIGHBORS

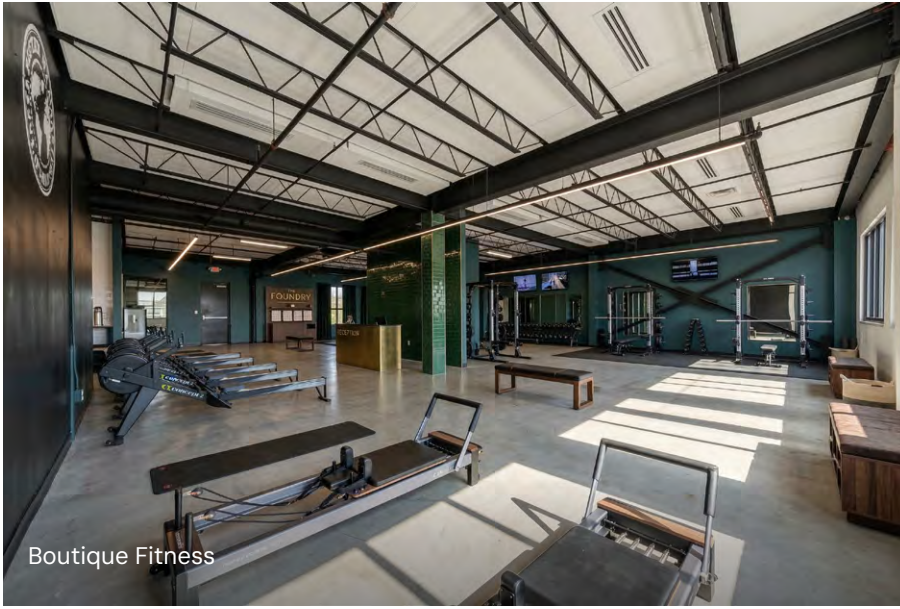
Subway, Walgreens, FedEx OnSite, The Rosemont, Lorimer Deli Food Corp., Williamsburg Organic Deli Corp, Before Coffee, HAAM Caribbean Plant Cuisine, Electrix Supply, Williamsburg Pizza, Greenleaf Grocers, Scholes Street Studio, HAVEN Boxing, Sazon Perez, Mamasushi, and more!



# PROPERTY PHOTOS



# PROPERTY RENDERINGS



Boutique Fitness



Medical-Wellness



Office



Event Space





PLACE  
YOURSELF  
ON THE  
WILLIAMSBURG  
MAP

## LOCATION OVERVIEW

### WILLIAMSBURG

Williamsburg is one of Brooklyn’s most vibrant and fast-growing neighborhoods, known for its creative culture, dining scene, and mix of historic industrial buildings and modern developments. The area attracts a diverse mix of residents, artists, and young professionals, creating steady daytime and evening activity.

327 Stagg Street is located in East Williamsburg, near active retail corridors such as Graham Avenue, Grand Street, and Metropolitan Avenue, which are lined with popular restaurants, cafés, and local shops. With convenient access to the L train at Graham Avenue and Grand Street, the area offers strong connectivity to Manhattan while maintaining Williamsburg’s distinctive neighborhood character.

### POINTS OF INTEREST

- McCarren Park
- Domino Park
- Williamsburg Waterfront
- Brooklyn Steel
- Music Hall of Williamsburg

### DEMOGRAPHICS

*Within a one-mile radius of the property*

48,329

Total Households

115,539

People

\$116,973

Avg Household Income

327 STAGG STREET, BROOKLYN, NY 11206

# 3,300 SF PRIME WILLIAMSBURG SECOND FLOOR OFFICE/RETAIL

Between Union Avenue & Lorimer Street

For Pricing Call: **212.433.3355**

**SHLOMI BAGDADI**  
212.433.3355 x101  
sb@tristatecr.com

**JOEY SAKKAL**  
212.433.3355 x208  
joey.s@tristatecr.com

**LEON JAJATI**  
212.433.3355 x1012  
leon.j@tristatecr.com

**TSC.**