

27 EAST 21ST STREET, NEW YORK, NY 10010

FOR LEASE

2,500 SF HISTORIC RETAIL SPACE AVAILABLE IN PRIME FLATIRON

Between Broadway & Park Avenue South



SHLOMI BAGDADI
212.433.3355 x101
sb@tristatecr.com

JOY FESCINE
212.433.3355 x224
joy.f@tristatecr.com

TRI STATE COMMERCIAL®

PROPERTY SUMMARY

LOCATION

Located in the Flatiron neighborhood of Manhattan.

HIGHLIGHTS

- Only a 2-minute walk to the R, W, and 6 trains at 23rd St, and the transcendent Madison Square Park
- The landlord will offer the space in white box condition, if desired

SPACE B

- 2nd Floor
- Former Spa
- 5 Private Rooms
- 2 Bathrooms with Showers
- Laundry Room
- Freight and Passenger Elevator

TRANSPORTATION

4 6 N Q R W Trains at 23rd Street

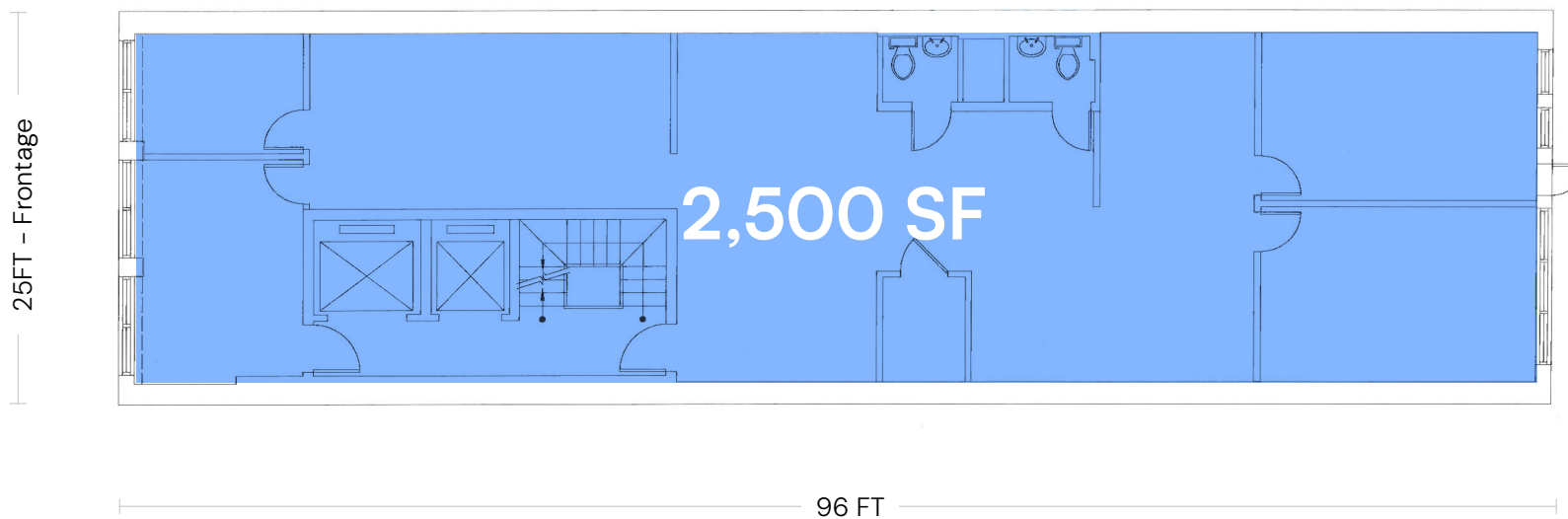
X7 X9 SIMC SIM3C SIM33C SIM4C BxM7 M3 M1 Bus Lines

NEIGHBORS

Starbucks, McDonald's, Domino's Pizza, Sweetgreen, Wendy's, Chipotle Mexican Grill, Chase Bank, Taco Bell, Subway, Kids Foot Locker, T-Mobile, Foot Locker, CVS Pharmacy, Bath & Body Works, Verizon, Manhattan Mini Storage, Daltile, American Olean, Marazzi Showroom & Design Studio, and more!



FLOOR PLANS



SECOND FLOOR

All square footages are approximate

PROPERTY PHOTOS



27 EAST 21ST STREET, NEW YORK, NY 10010

2,500 SF HISTORIC RETAIL SPACE AVAILABLE IN PRIME FLATIRON

Between Broadway & Park Avenue South

For Pricing Call: **212.433.3355**

SHLOMI BAGDADI
212.433.3355 x101
sb@tristatecr.com

JOY FESCINE
212.433.3355 x224
joy.f@tristatecr.com

TSC.