

229 EMPIRE BOULEVARD, BROOKLYN, NY 11214

FOR LEASE

2,325 SF MOVE-IN READY RETAIL SPACE WITH 23 FT OF FRONTAGE

Between Rogers Avenue & Bedford Avenue



SHLOMI BAGDADI
212.433.3355 x101
sb@tristatecr.com

JOEY BOUZAGLOU
212.433.3355 x103
joseph.b@tristatecr.com

TRI STATE COMMERCIAL®

PROPERTY SUMMARY

LOCATION

Located in the Crown Heights neighborhood of Brooklyn.

SPACE DETAILS

- 23 FT Of Frontage
- HVAC
- Sprinklers
- Flexible Space Perfect for a Variety of Users
- Ready For Immediate Occupancy

TRANSPORTATION

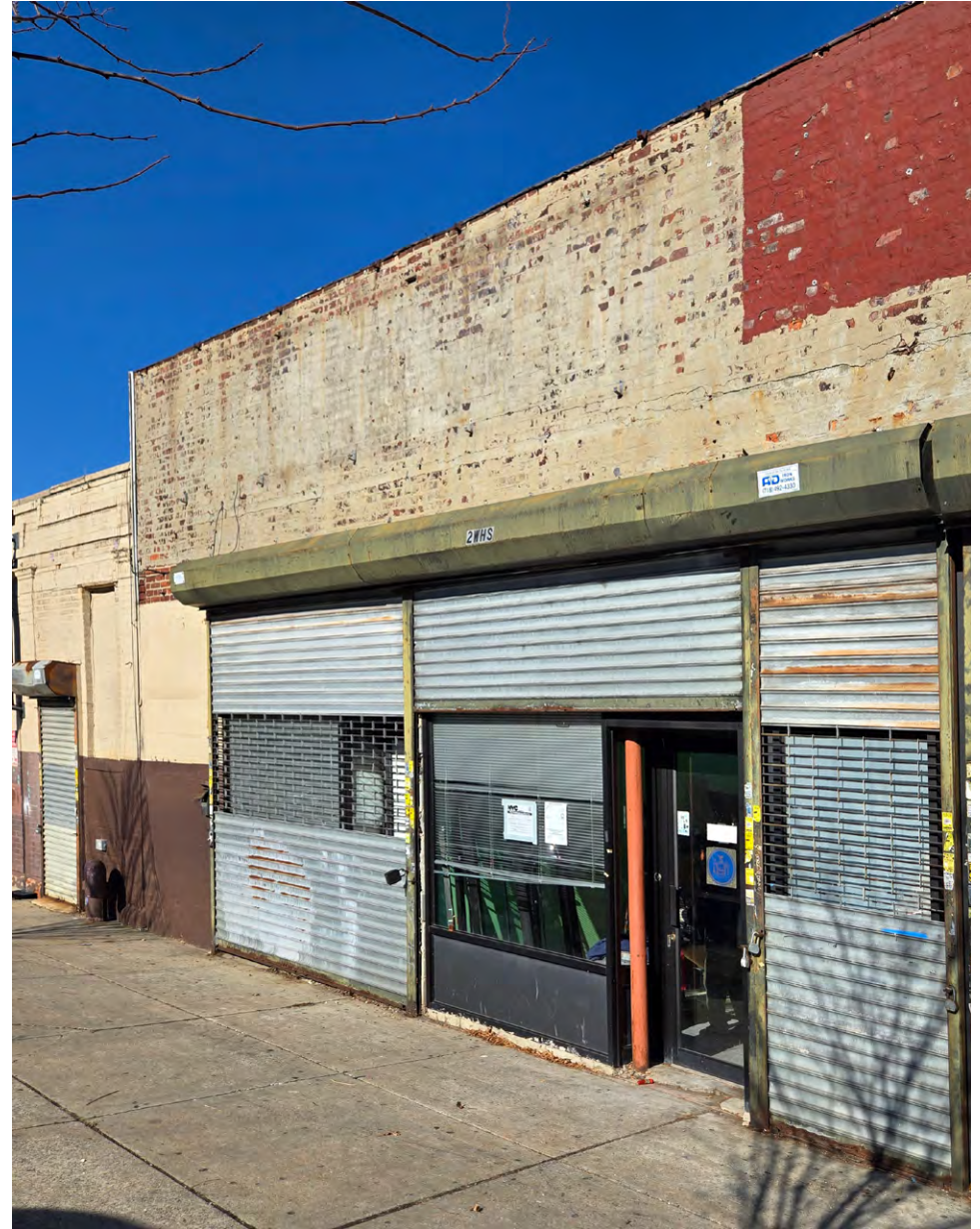
2 **5** Trains at Sterling Street

B **Q** **S** Trains at Prospect Park

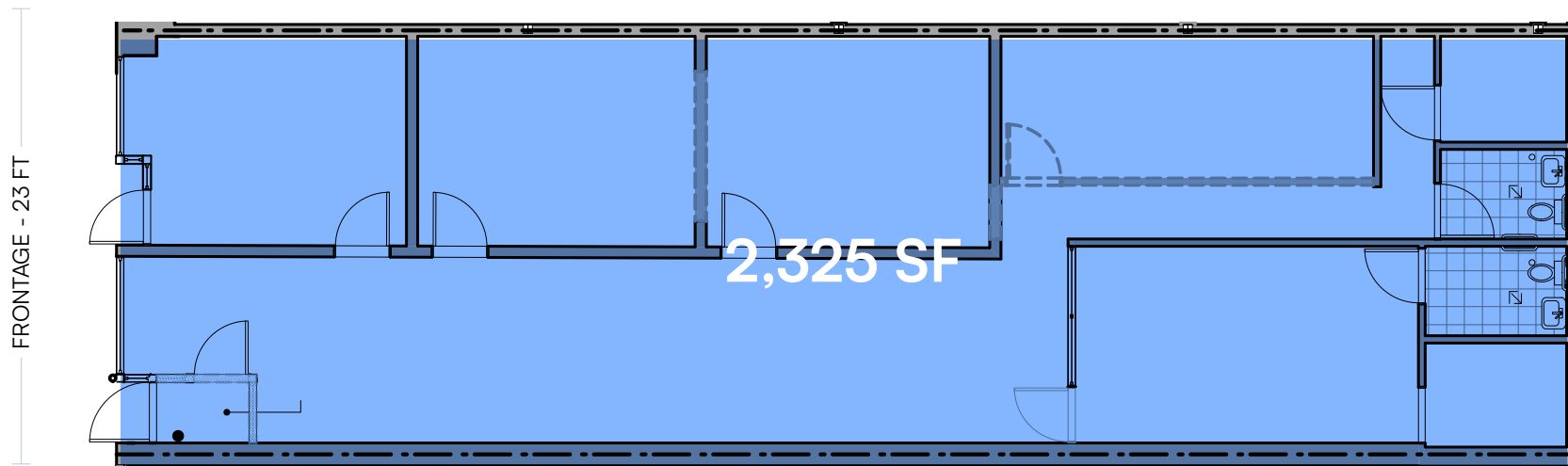
B43 **B44** **B44-SBS** **B49** Bus Lines

NEIGHBORS

Burger King, Extra Space Storage, Stop and Stor Prospect Park / Crown Heights, Bomberino, Miss Barb's, Jerusalem Falafel House, Phillips Pediatrics, Live Good Pharmacy, Sterling Deli and Grill, Lenny's Pizza, Cross Town Liquor and Wine, Novelli Cafe and Restaurant, and more!

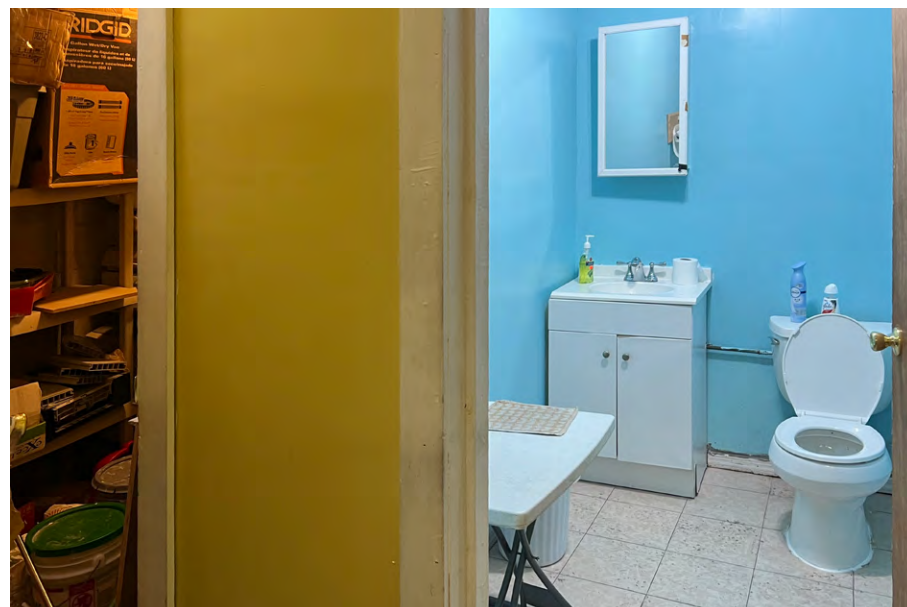
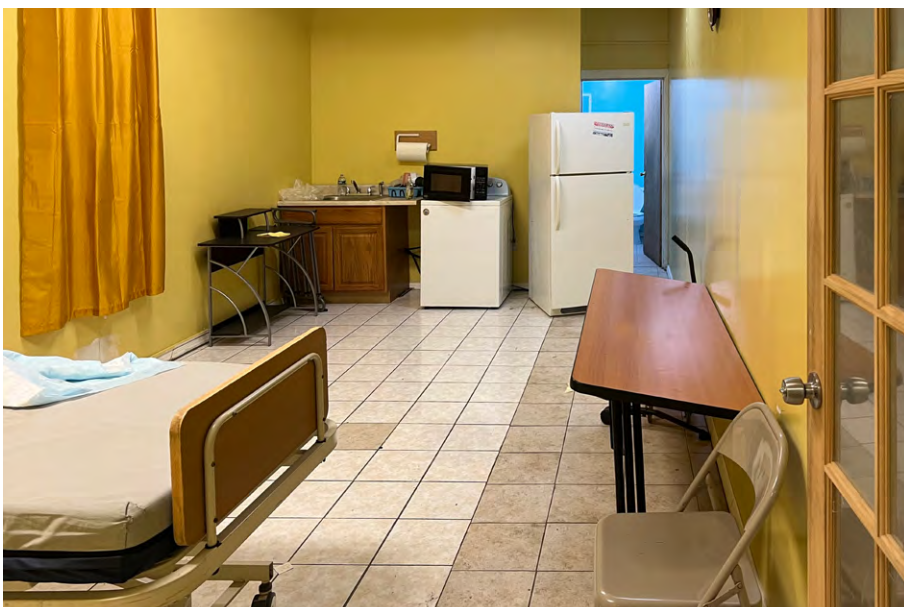


FLOOR PLANS

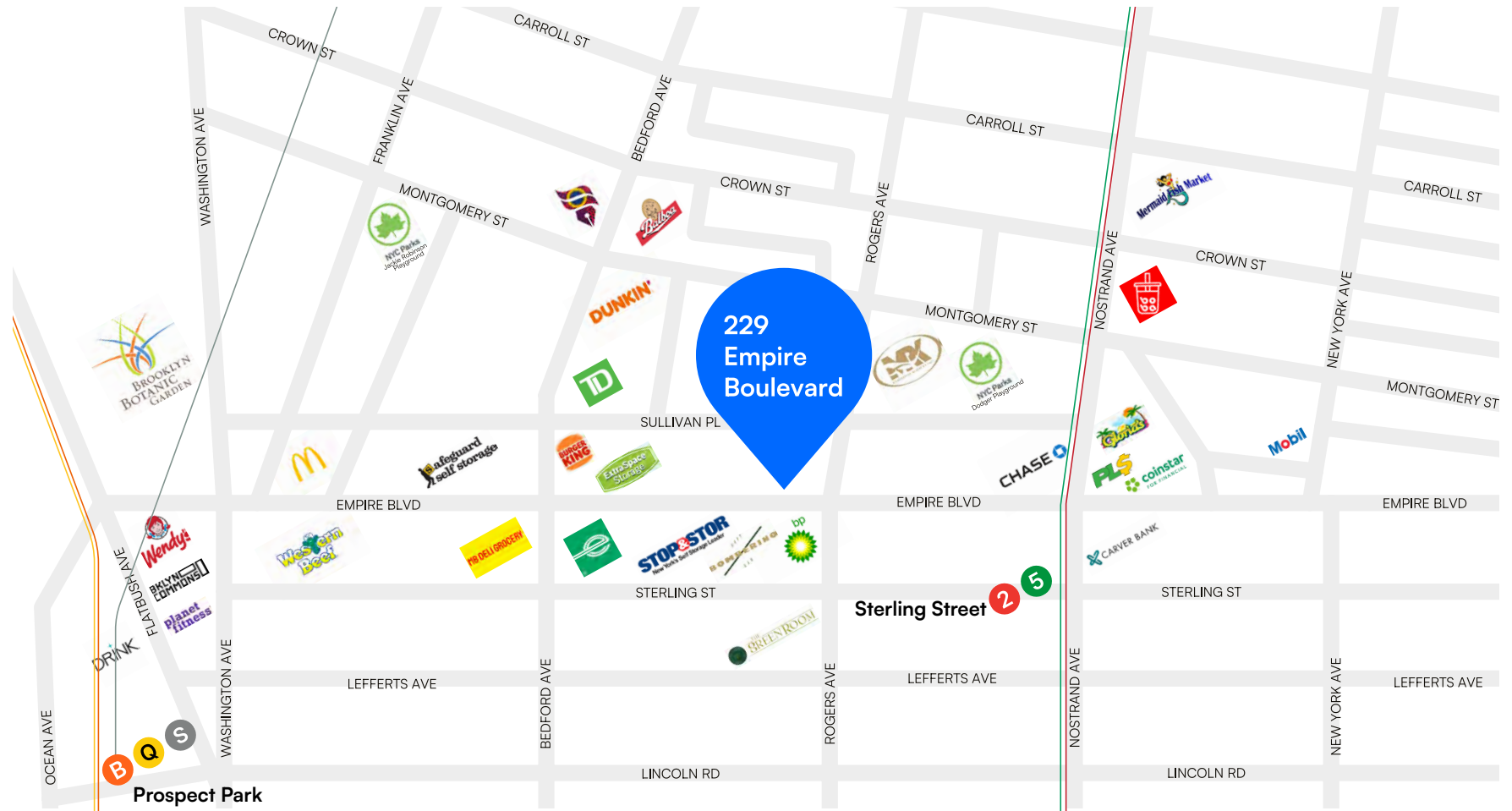


All square footages are approximate

PROPERTY PHOTOS



RETAIL MAP



229 EMPIRE BOULEVARD, BROOKLYN, NY 11214

2,325 SF MOVE-IN READY RETAIL SPACE WITH 23 FT OF FRONTAGE

Between Rogers Avenue & Bedford Avenue

For Pricing Call: **212.433.3355**

SHLOMI BAGDADI
212.433.3355 x101
sb@tristatecr.com

JOEY BOUZAGLOU
212.433.3355 x103
joseph.b@tristatecr.com

TSC.