

170 SOUTH 1ST STREET, BROOKLYN, NY 11211

FOR LEASE

# 420 SF PRIME WILLIAMSBURG OFFICE SPACE

Between Bedford Avenue & Driggs Avenue



**SHLOMI BAGDADI**  
212.433.3355 x101  
sb@tristatecr.com

**MICHAEL ELKHARRAT**  
212.433.3355 x216  
michael.e@tristatecr.com

**TRI STATE COMMERCIAL®**

## PROPERTY SUMMARY


### LOCATION

Located in the Williamsburg neighborhood of Brooklyn.

### SPACE DETAILS

- Glass Frontage
- Brand New
- Sprinklers
- Perfect for Office Users, Community Facility Users, and more!

### TRANSPORTATION

 Trains at Marcy Avenue

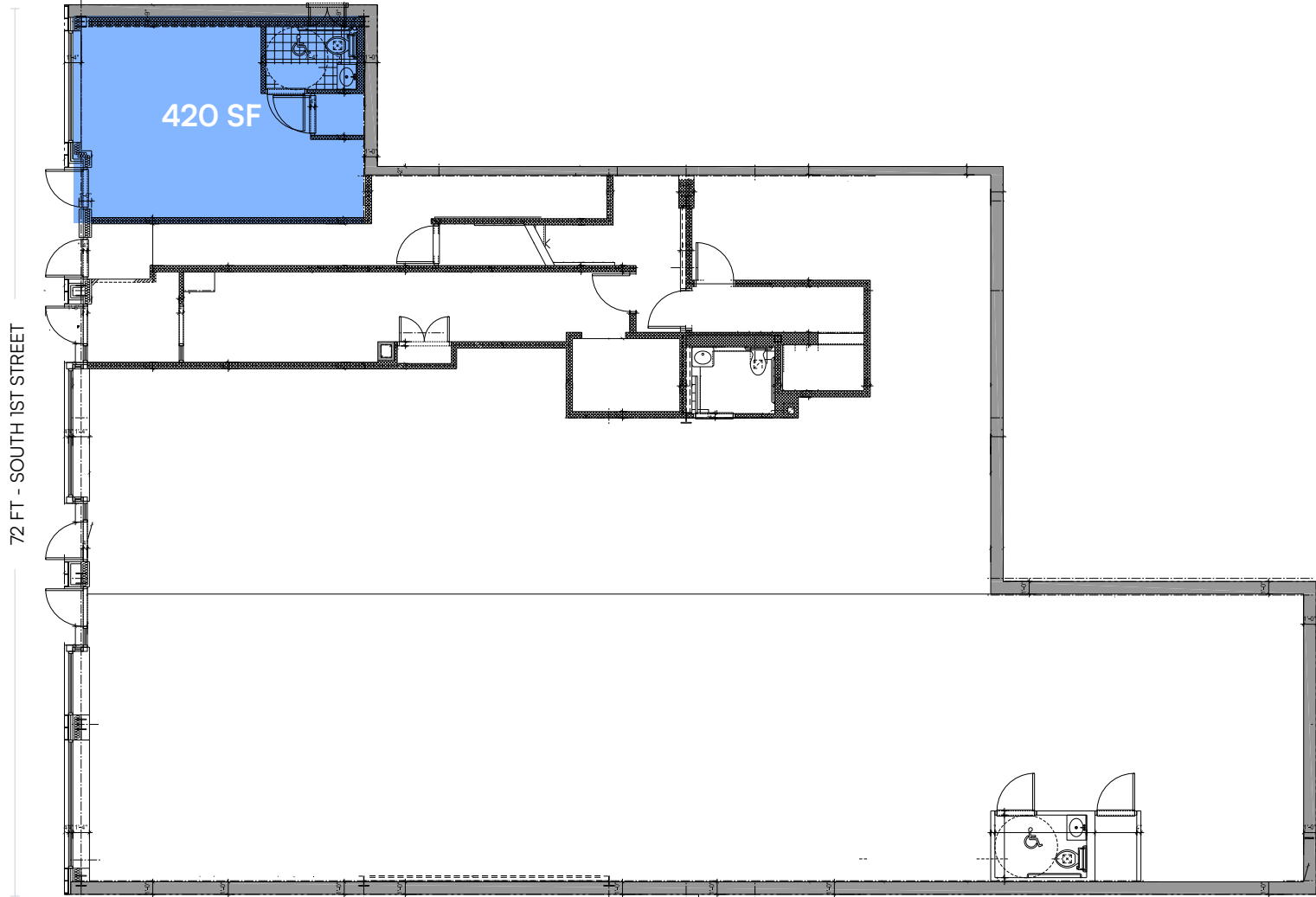
 Bus Line

### NEIGHBORS

Tabare, Fini Pizza, Vanessa's Dumplings, Maison Premiere, Supreme, Mission Sandwich Social, Namkeen, Lucky Dog, Oslo Coffee Roasters, Super Burrito, Layla, Tacombi, The Butcher's Daughter, GHOST, and more!



# FLOOR PLANS



## FIRST FLOOR

All square footages are approximate

# PROPERTY PHOTOS



# RETAIL MAP



170 SOUTH 1ST STREET, BROOKLYN, NY 11211

# 420 SF PRIME WILLIAMSBURG OFFICE SPACE

Between Bedford Avenue & Driggs Avenue

For Pricing Call: **212.433.3355**

**SHLOMI BAGDADI**  
212.433.3355 x101  
sb@tristatecr.com

**MICHAEL ELKHARRAT**  
212.433.3355 x216  
michael.e@tristatecr.com

**TSC.**