

170 SOUTH 1ST STREET, BROOKLYN, NY 11211

FOR LEASE

2,000 SF RETAIL SPACE NEXT DOOR TO Y7 YOGA

Between Bedford Avenue & Driggs Avenue



SHLOMI BAGDADI
212.433.3355 x101
sb@tristatecr.com

MICHAEL ELKHARRAT
212.433.3355 x216
michael.e@tristatecr.com

TRI STATE COMMERCIAL®

PROPERTY SUMMARY

LOCATION

Located in the Williamsburg neighborhood of Brooklyn.




HIGHLIGHTS

- Brand New
- Sprinklers

SPACE DETAILS

- Bi-level Retail Space
- 2,000SF First Floor
- 1,700 SF Legal Lower Level

TRANSPORTATION

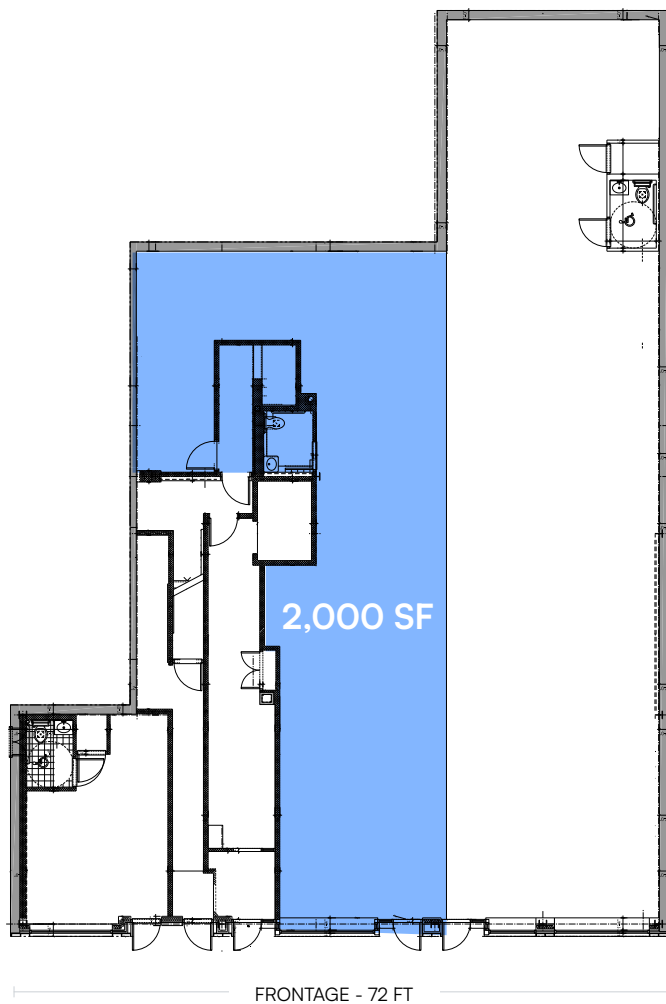
-  Train at Bedford Avenue
-  Trains at Marcy Avenue
-  Bus Line

NEIGHBORS

Tabare, Fini Pizza, Vanessa's Dumplings, Maison Premiere, Supreme, Mission Sandwich Social, Namkeen, Lucky Dog, Oslo Coffee Roasters, Super Burrito, Layla, Tacombi, The Butcher's Daughter, GHOST, and more!



FLOOR PLANS



FIRST FLOOR

All square footages are approximate

PROPERTY PHOTOS



RETAIL MAP



170 SOUTH 1ST STREET, BROOKLYN, NY 11211

2,000 SF RETAIL SPACE NEXT DOOR TO Y7 YOGA

Between Bedford Avenue & Driggs Avenue

For Pricing Call: **212.433.3355**

SHLOMI BAGDADI
212.433.3355 x101
sb@tristatecr.com

MICHAEL ELKHARRAT
212.433.3355 x216
michael.e@tristatecr.com

TSC.